

Garbage Bins Moers

Hardware

Part	Links
CubeCell AB-01 Dev-Board	Product Website
VL53L0X Time-of-Flight ranging sensor	Product Website
2000 mAh LiPo-Battery	



Fig.: Garbage Bin in the IoT-Lab HSRW



Fig.: Sensor Module

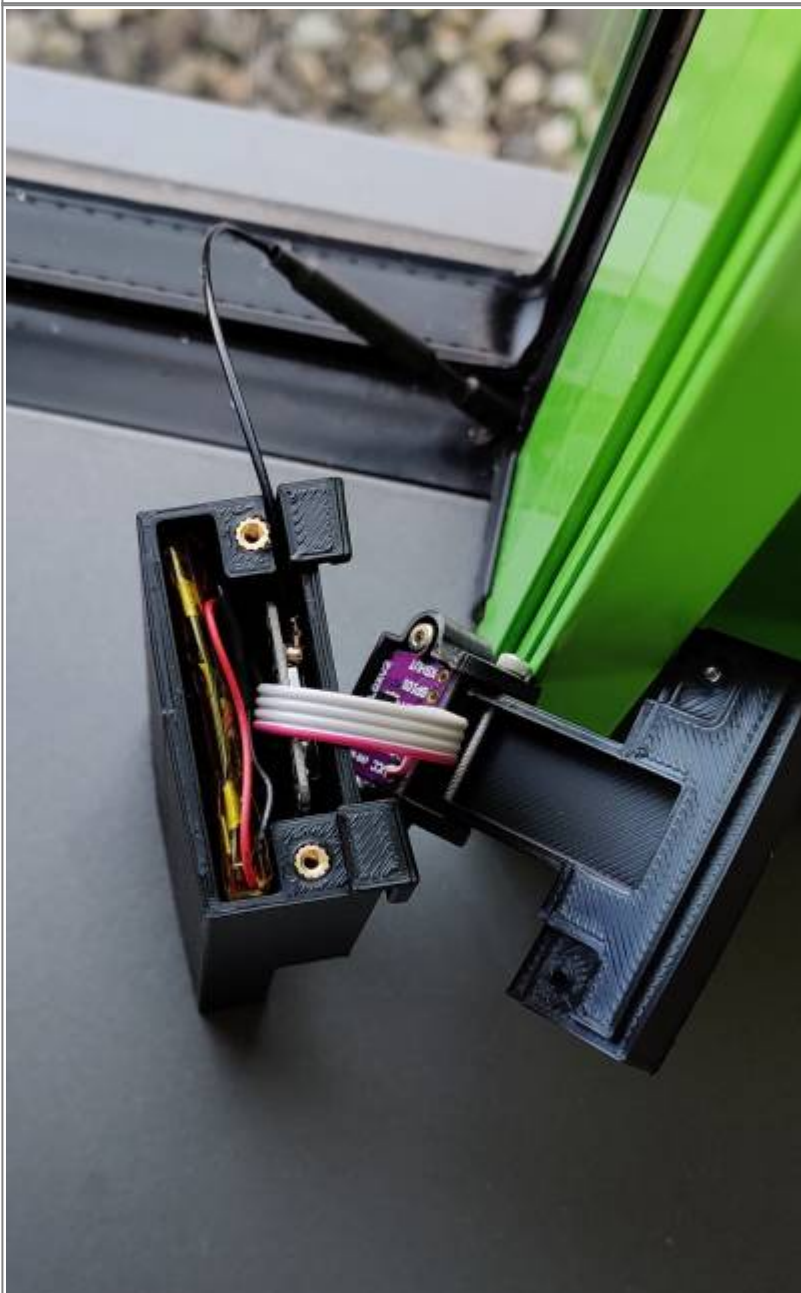


Fig.: Insides of the Module

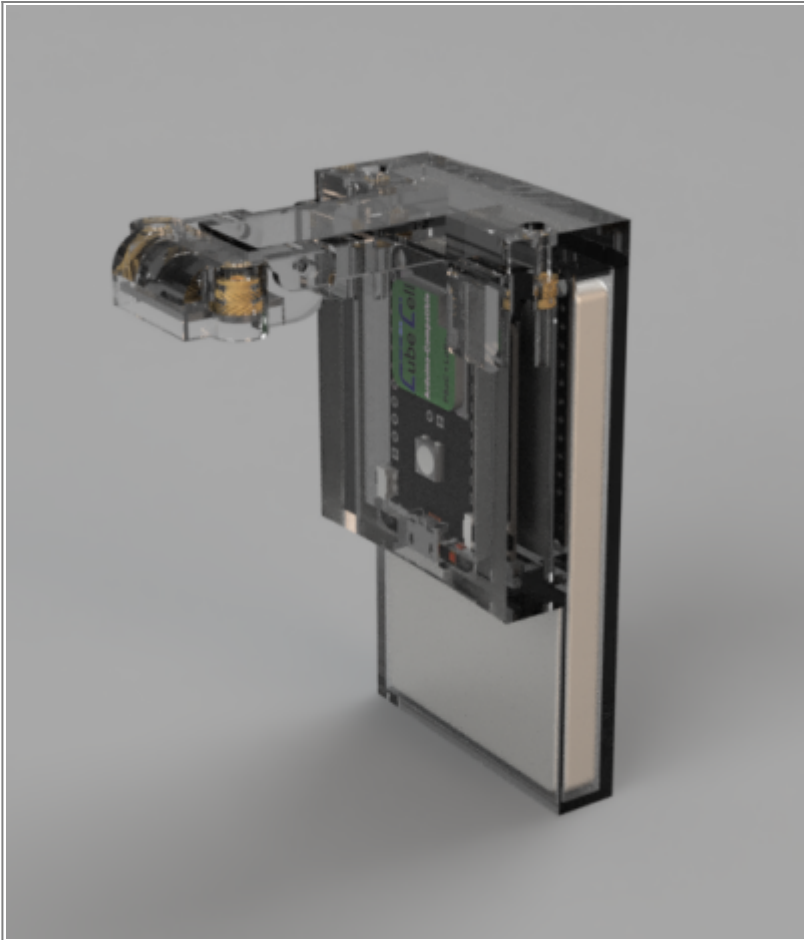


Fig.: CAD



Fig.: Sensor Module installed in the door of the trashcan



Fig.: Sensor Module installed in the door of the trashcan

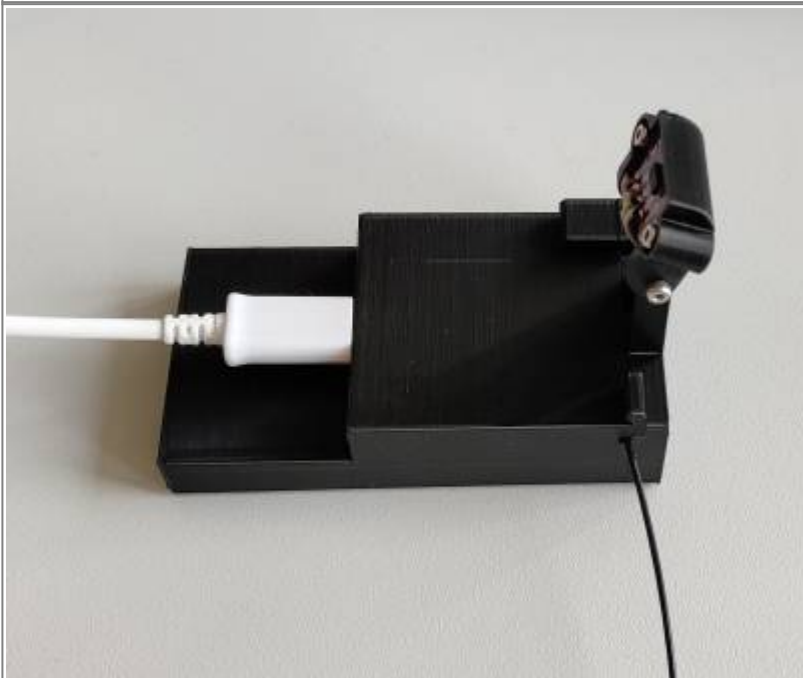


Fig.: Charging/Programing the Module via USB

Software

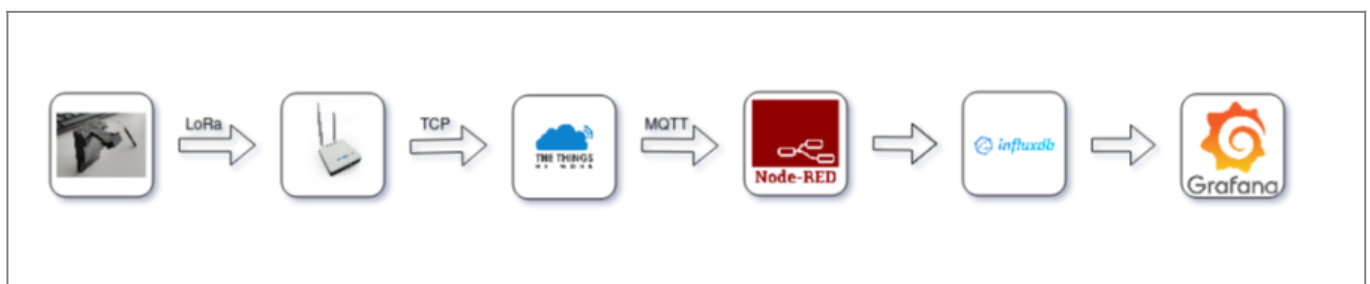


Fig.: Data Flow

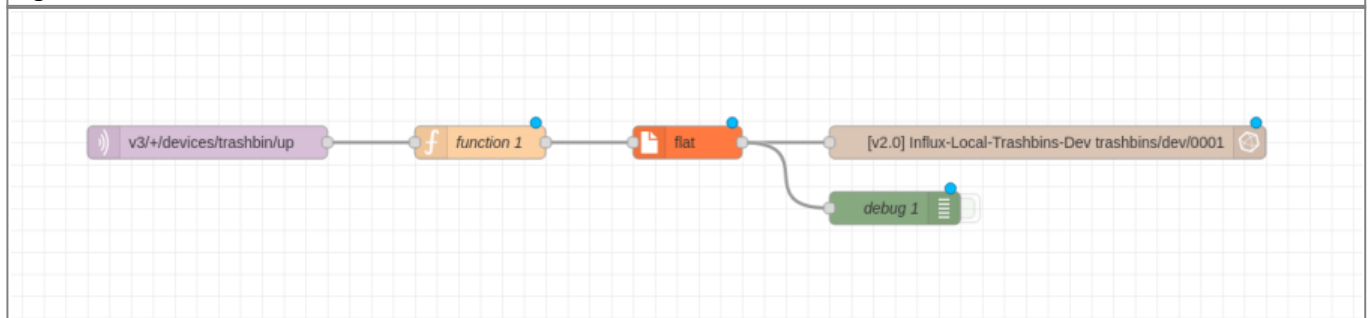


Fig.: Node-Red Flow

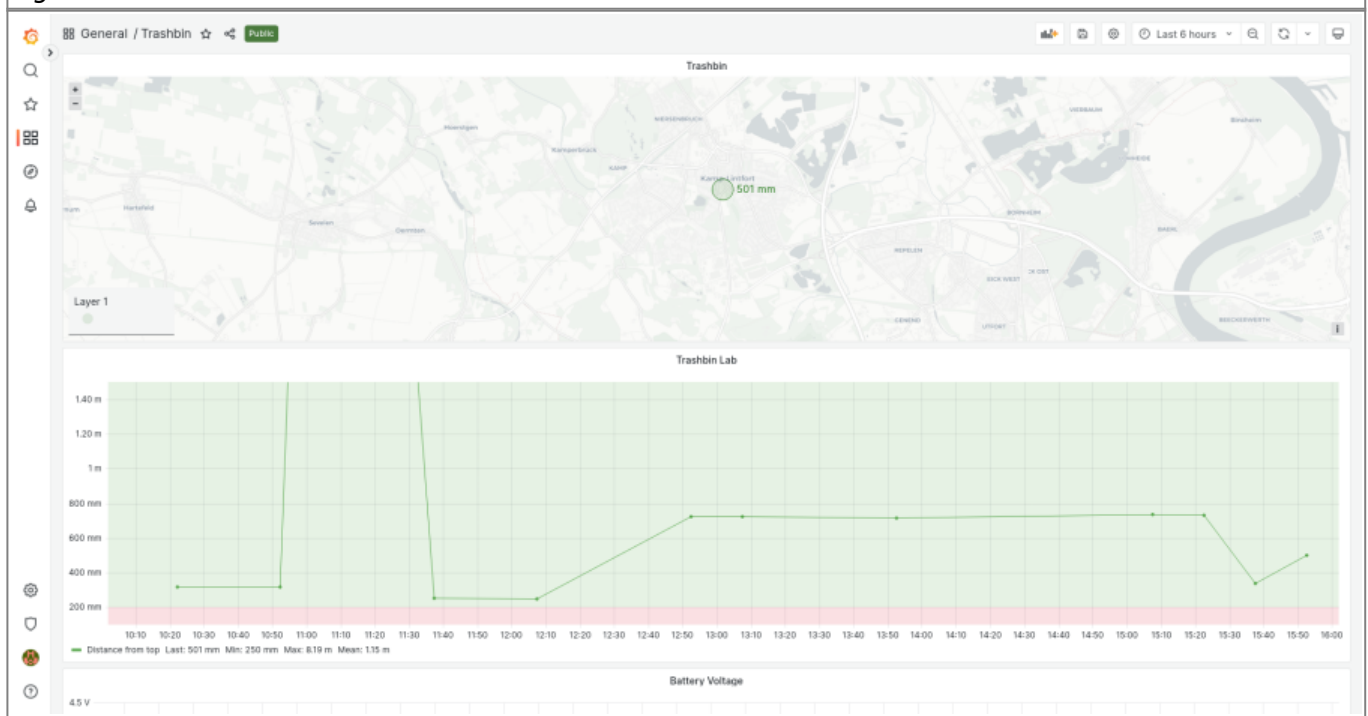


Fig.: Grafana Dashboard

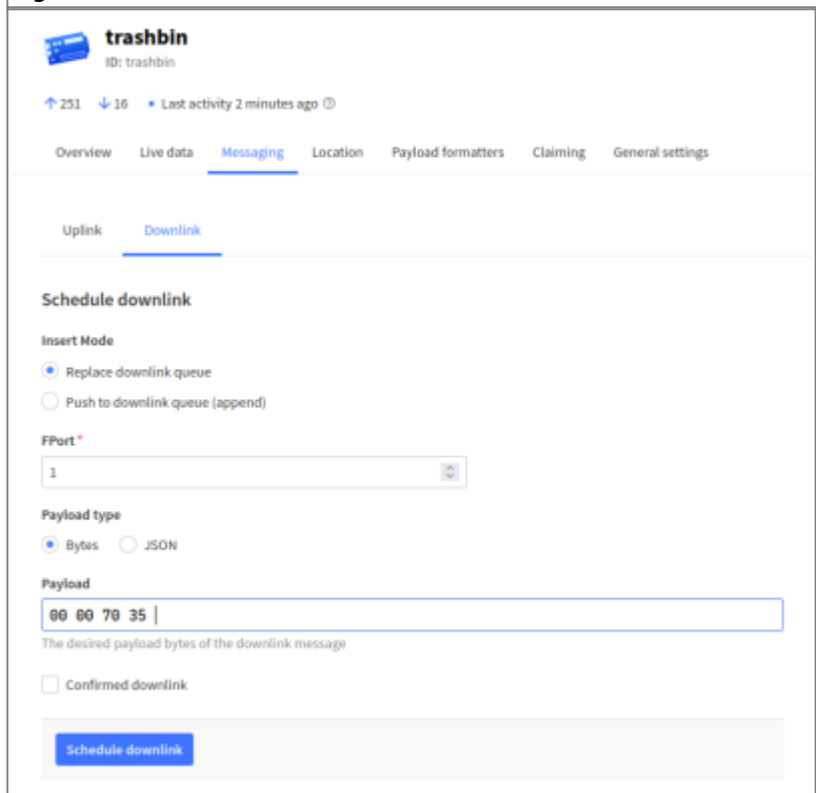


Fig.: Upload interval can be changed via a LoRa Downlink

From: <https://wiki.eolab.de/> - HSRW EOLab Wiki

Permanent link: https://wiki.eolab.de/doku.php?id=eolab:moers_garbage_bins:start

Last update: 2023/03/16 17:43

