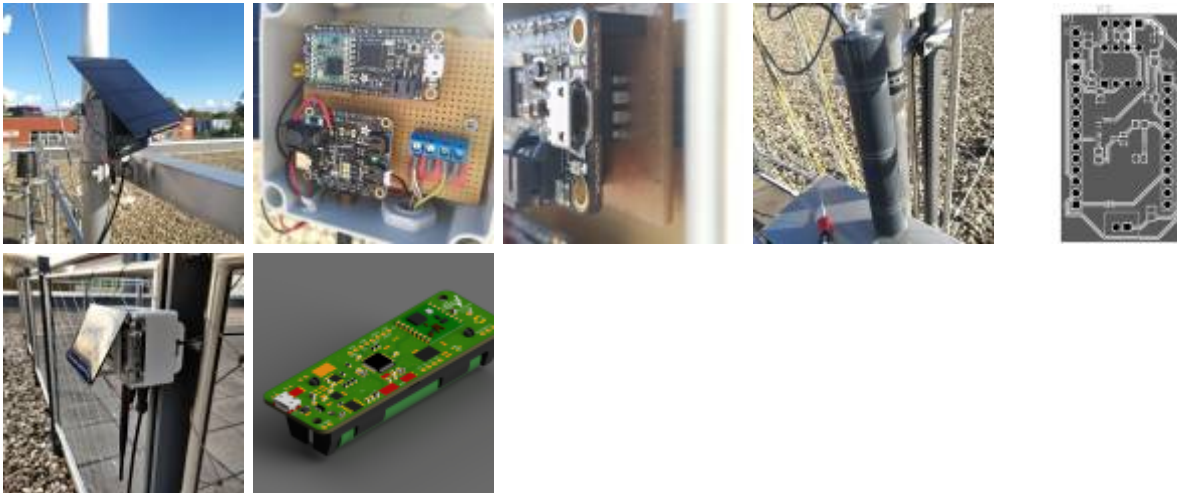


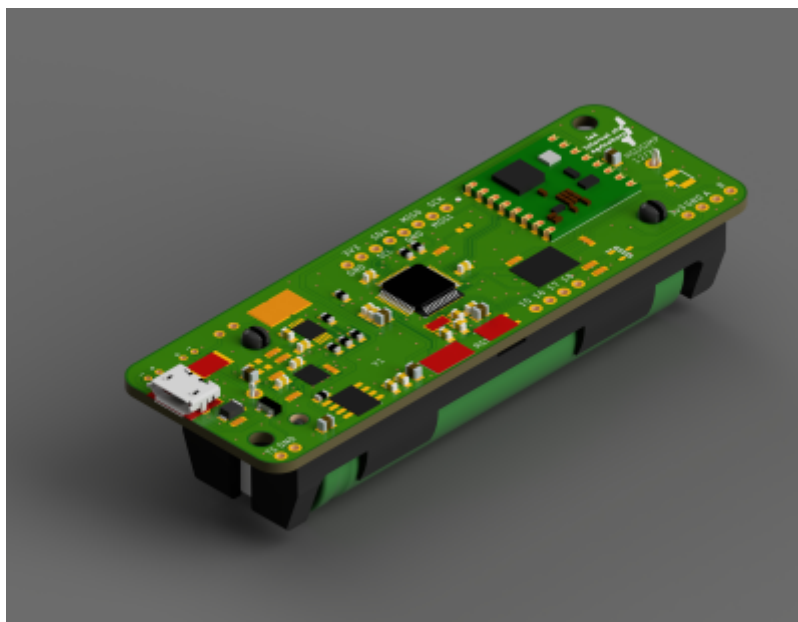
Sceme Lora Node (Prototype)

This device can connect to a Sceme Sensor for measuring soil permittivity and temperature at three different depths. The data gets transmitted to an IoT-Stack for saving the data permanently and displaying it nicely in graphs. The data from a test we run on our terrace can be found here: [Grafana Dashboard](#)

The device is powered by solar and an internal battery. It can also monitor the battery. The battery levels get also logged on the dashboard. This prototype also includes a custom-made circuit board.



Sceme Lora Node (Prototype v2)



From:

<https://wiki.eolab.de/> - **HSRW EOLab Wiki**

Permanent link:

https://wiki.eolab.de/doku.php?id=eolab:sceme_node:start&rev=1644397223

Last update: **2022/02/09 10:00**

