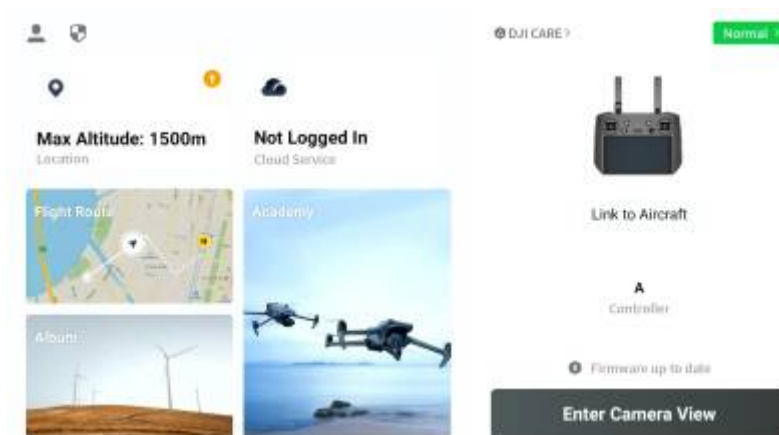


DJI Mavic - Mission Planning and Execution

Mission Planning

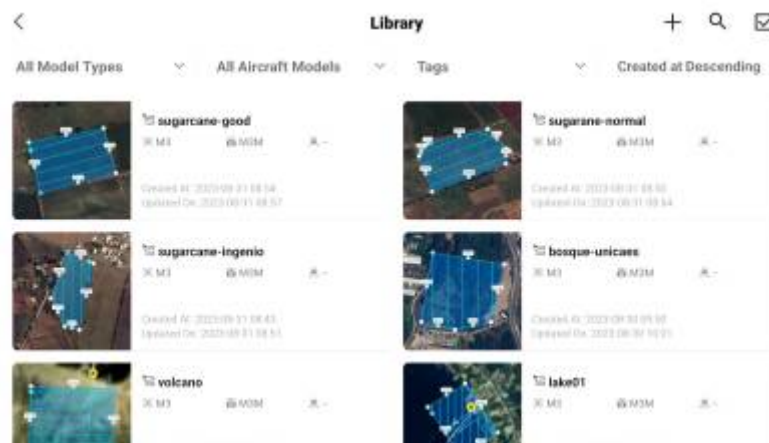
For the initial planning of a mission, you don't need to be connected to the drone. You will just need the controller.

Mapping out the area



1.

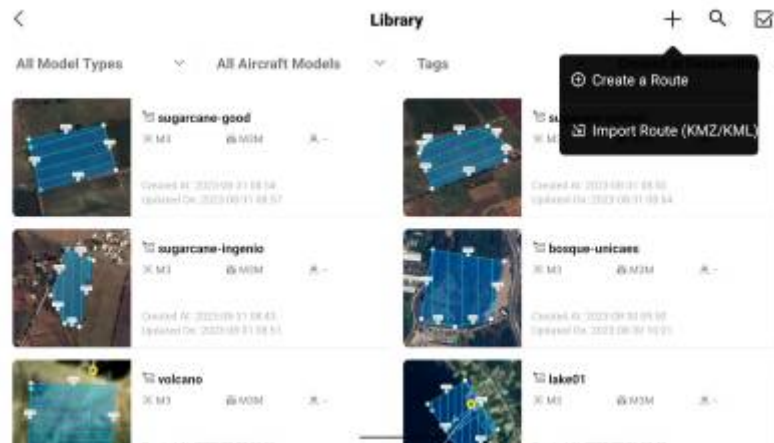
Fig. 1: Choose "Flight route"



2.

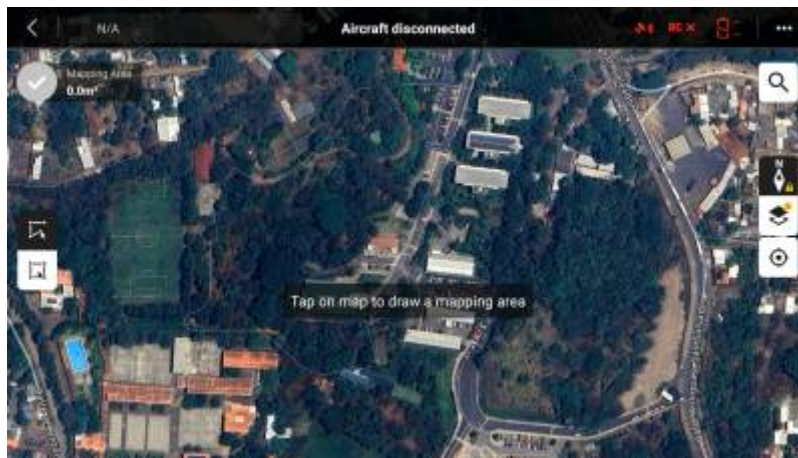
Fig. 2: Flight route menu

- 1. Here you will see all the routes you created before
- 2. You can add new missions by clicking the plus in the top right corner



3.

Fig. 3: Choose "Create a route"



4.

Fig. 4: Zoom in to the area you roughly want to map



5.

Fig. 5: Tap the outline corners of the area that you want to map

1. You can add new corners in between by clicking the small +-Icons on the individual lines

Camera setup



1.

Fig. 6: Select "M3E Series" if flying the DJI Mavic 3M

1. Drone setup

For reference here also an official video by DJI: [How To Start A Mapping Mission And Create 2D Maps- Episode 9](#)

Flying the Mission

From:
<https://wiki.eolab.de/> - HSRW EOLab Wiki

Permanent link:
<https://wiki.eolab.de/doku.php?id=latinet:unicaes:opendronemap:mision-planning&rev=1693597131>

Last update: 2023/09/01 21:38

