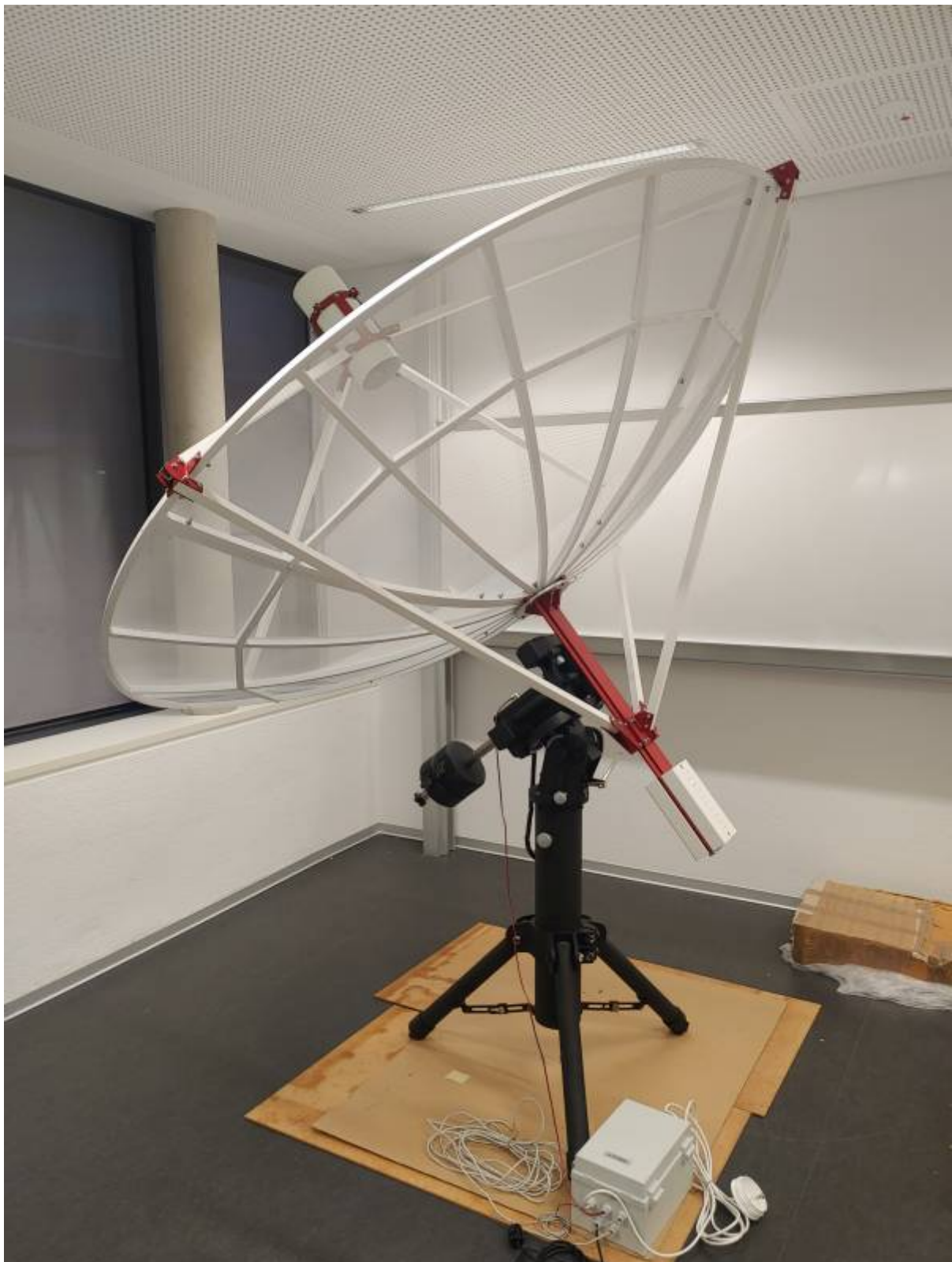


Radiotelescope

PrimaLuce Spider 230C

Project Leader: Frank Zimmer

Coordinator: Sarah Rostalski



Specifications of the Spider 230C Radiotelescope according to [Prima Luce](#)

- Antenna diameter (m): 2.3
- Antenna type: Prime focus
- Working frequency: 1420 MHz
- Bandwidth: 50 MHz
- Feed: H-FEED, optimized for 1420 MHz
- LNA: 2 high gain and stability 1420 MHz LNA units
- Polarization: circular, left and right hand
- Receiver: H142-One for 1420 MHz radio astronomy
- Spectrometer: 1024 channels
- Radiometer: 50 MHz instantaneous bandwidth
- A/D converter: 14 bits
- Control software: RadioUniversePRO
- Weatherproof: No

Commercial Offers

https://www.astroshop.de/m,Dome-Parts-GmbH?gclid=CjwKCAiAlrSPBhBaEiwAuLSDUFLSnAiKkOaE_08W6_kgHEQa3DMKs06vYuRYQtBbH2M_p923mHUPHBoCm8YQAvD_BwE

<https://www.astroshop.de/m,Dome-Parts-GmbH>

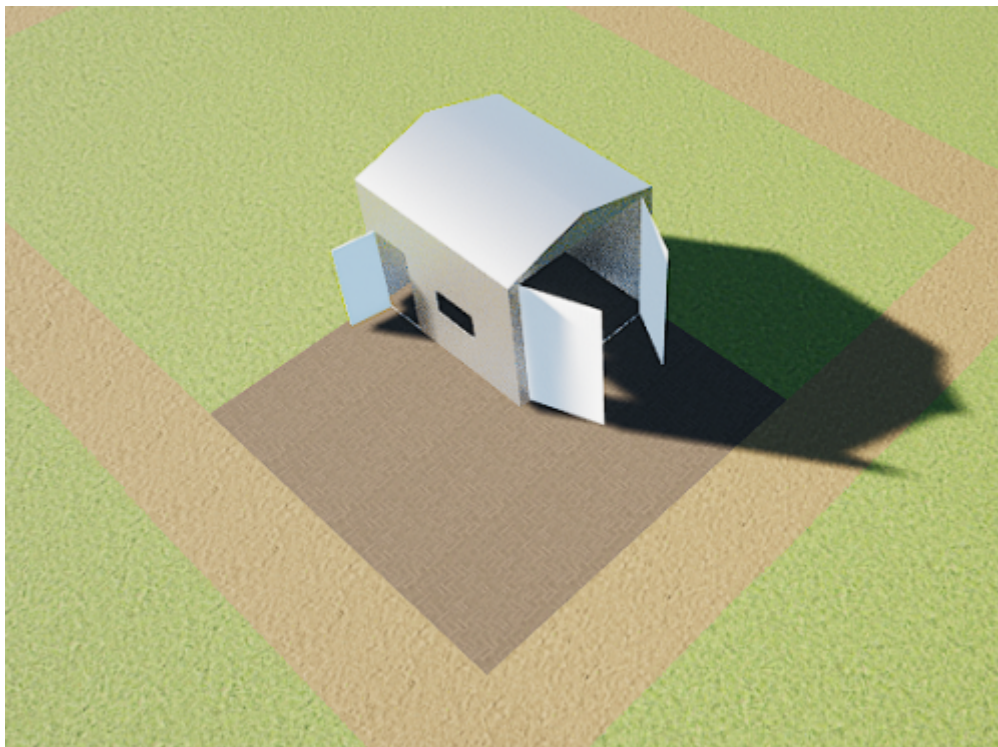
Building Action

“Roll-Off Observatory” or “Wooden Shelter” or “GFK Radom”

[Possible location in Kamp-Lintfort \(size ca. 7,5m x 7,6m\)](#)



Digital model of a wooden shelter by Nicolas Fischöder



From:

<https://wiki.eolab.de/> - **HSRW EOLab Wiki**

Permanent link:

<https://wiki.eolab.de/doku.php?id=projects:radiotelescope:start&rev=1642937672>

Last update: **2022/01/23 12:34**

