

RFID for Chicken

Reseller




Company	Location	SDK	Chip Series	Remarks
FONKAN	Shenzhen	SDK not publically downloadable		
INVELION	Shenzhen	SDK downloadable		
CHAFON	Shenzehn	SDK downloadable		pw: chafonsdk

Chicken Wing Tags Plastic	Made-in-China
Marc RFID Store	Aliexpress

Chip	Product Link	Company
E710	Impinj E710 Reader Chip Product Brief	impinj
Ennn Series	Impinj E910, E710, E510, and E310 RAIN RFID Reader Chip Datasheet v4	impinj

- Press Release on Ennn SDK:
<https://www.impinj.com/library/blog/speed-up-device-development-with-impinj-e-family-firmware-and-sdk-v20>

Chafon Products

Purchased	Product	Chip	Company	Speed	Price	Datasheets
	CF811 Even UHF eight-channel Fixed Reader		Chafon	200 tags per sec	USD180	cf811_en.pdf
	CF815 Even E710 UHF four-channel Fixed Reader	E710	Chafon	800 tags per sec	USD195	cf815_en.pdf
	CF816 Even E710 UHF eight-channel (mux) Fixed Reader	E710	Chafon	800 tags per sec	USD240	cf816_en.pdf
	CF800 OS UHF 8 ports fixed reader		Chafon	800 tags per sec	USD380	cf800_en.pdf
	CF-RA8080 UHF RFID ceramic antenna		Chafon	3-4m read range	USD20	cf-ra8080_en.pdf
	CF-RA5005 UHF 5dBi Counter Antenna		Chafon		USD27.5	cf-ra5005_cn.pdf
	CF-RA6005 UHF Narrow Angle Beam Antenna		Chafon			cf-ra6005_cn.pdf
	CF661 Prime UHF 6dbi integrated reader		Chafon	200 tags per sec	USD80	cf661_en.pdf

CF816 Multiplexing

- ~0.4s one cycle (Start from port1 to port8)

My suggestion is to buy **CF816** Fixed reader. **CF816** and **CF811** are basically the same, the main difference is that **CF816** is using impinj E710 chip, which is more sensitive in reading and has a higher reading speed. **CF816** also has more API commands than **CF811**. **CF800** is also using impinj E710 chip and has Android operating system additionally, which I think is

not necessary to us. The API of the **CF816** and **CF800** are the same.

And buying two to four **CF-RA8080** UHF RFID ceramic antennas to use with the Fixed reader, The gate size of the chicken house is around 30cm height and 27cm width. The ceramic has a size of 80*80*5mm, with circular polarization, its reading angle is 60 degrees forward. So it is possible to cover the gate size. But we can also go for a PCB antenna. For PCB antennas, I suggest **CF-RA5005** UHF 5dBi Counter Antenna, also with circular polarization (120*120*6.5mm).

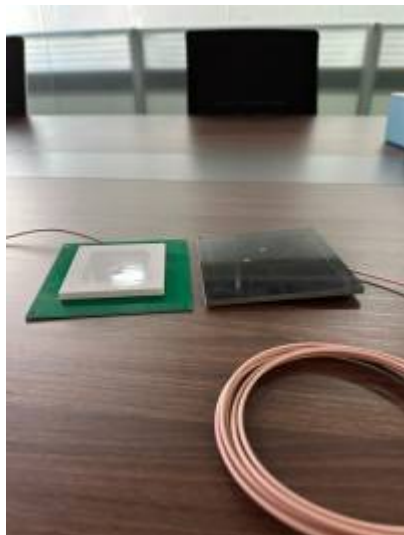




Fig.1 CF-RA8080 (Left) CF-RA5005 (Right)

CF-RA6005 UHF Narrow Angle Beam Antenna fits the gate width perfectly, but it is not waterproof.

And two **CF661** integrated readers, with a read range 0-6 meters. Prime reader and Fast reader are using the same SDK.

Wing Tags


Seller	Wing Tags	
Game and Poultry	game_poultry_2022_flyer.pdf	game_poultry_catalogue_2025_euro_direct_-_english.pdf
	Wonderband	
	CCC Tag	
	Offset CCT Tag	
Marc RFID Store		
water washing tags		
RFID UHF foot ring tags		







<p>Made-in-China</p>		
<p>Made-in-China Customization</p>		
<p>Caisley</p>		
<p>National Band & Tag Company</p>		

UHF RFID tags set of various size

<p>860-960MHz ISO18000-6C UHF RFID tags samples 10pcs per kind *10kinds</p>	
<p>10PCS Sample Long Range 1-12M RFID UHF Tags Wet Inlay Adhesive Sticker EPC Gen2 6C 860-960Mhz For Asset Tracking Inventory</p>	
<p>Passive UHF RFID Anti Metal Sticker 18000-6c Ultra Thin RFID Metal Sticker Tag for Asset Tracking Management</p>	
<p>10PCS Long Range RFID UHF Tags Sticker Wet Inlay 860-960mhz Alien U7 EPC Global Gen2 ISO18000-6C</p>	
<p>860-960MHz ISO18000-6C UHF RFID anti metal tags RFID passive cards</p>	
<p>Hitachi UHF Ultra Small Package Tag (2.5mm x 2.5mm)</p>	<p>hitachi_pkg_tag.pdf</p>
<p>Mini-UHF-RFID 8mm ø</p>	

Tags size/range comparison CF816

Tag Type	Tag Photo	size	range (CF816)	range (CF661)	conditions
1		<p>7,08 * 1,6mm</p>	<p>0-3mm</p>	<p>~</p>	<p>few mm only at the edge of the antenna</p>
2.1		<p>12,28mm ø</p>	 <p>45cm</p>	 <p>37cm</p>	<p>Less curved surface</p>

Tag Type	Tag Photo	size	range (CF816)	range (CF661)	conditions
2.2		12,28mm ø	 14cm	 14cm	14cm for the more curved surface was measured in the condition that pointing the tag either to right or left. And the detection was very bad when pointing the tag upward or downward.
3		4 * 95,5mm	 ~180cm	 ~99cm	warpped to a surface area of 17mm * 9.22mm

Mounting for antennas

Product	Material	Price	number of joint
OHLPRO Heavy Duty Drilling Base Tablet Holder	Plastic	€23.99	1-3

Geometry

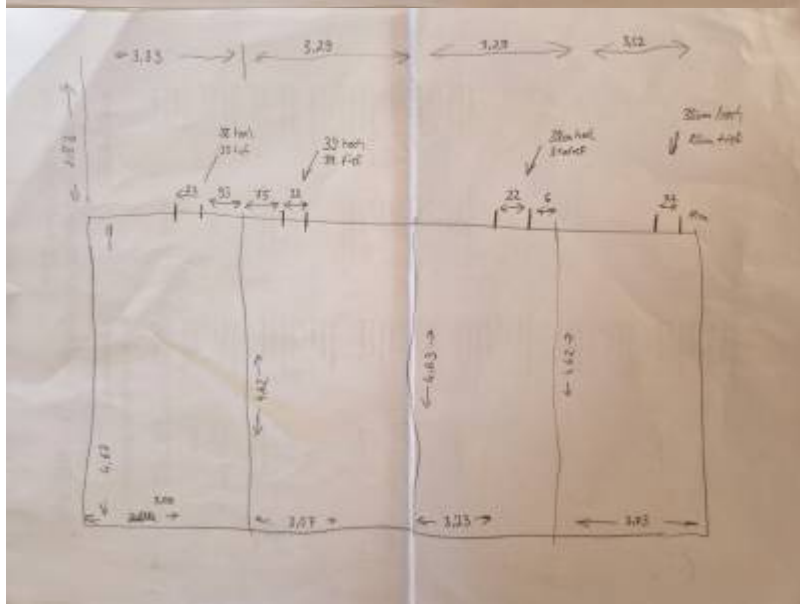
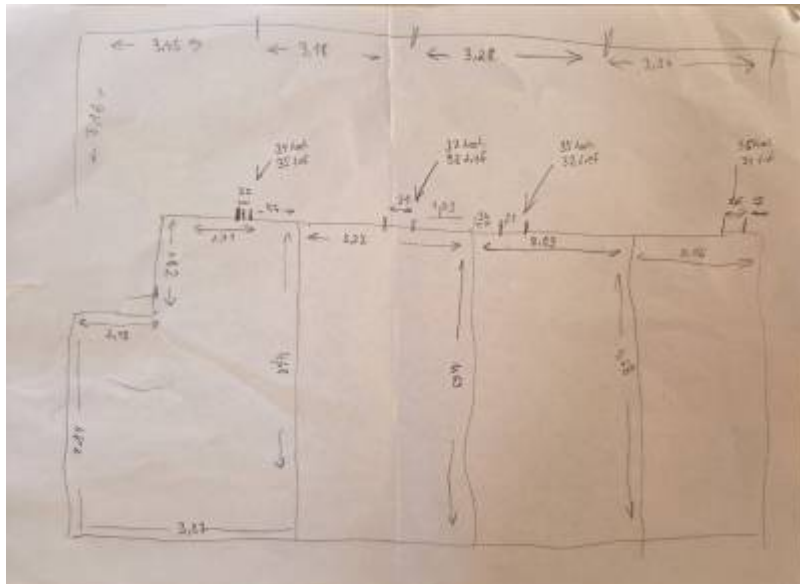
Dicke der Außenwand ca. 30 cm.
Abstand der Klappen

Stall 1

- 1 zu 2: 1,60 m
- 2 zu 3: 5 m
- 3 zu 4: 3,56 m

Stall 2

- 5 zu 6: 2,48 m
- 6 zu 7: 1,28 m
- 7 zu 8: 5,20 m







More informations about wing band/tags

- [Kevin J.McGowan's Crow study](#)
- [Jane Robinson \(2022\): RFID in Turkey Breeding: A better path to progress](#)
- [GPS Pigeon Tracking Ring](#)
- [Friends of Red Kites in the North East of England](#)
- [Phil Littler and John Middleton \(2014\): Marsh Harriers strike out across Europe](#)
- [Rogier Poultry Supplies: Leg Bands, Wing Bands, and Zip Ties](#)

From:

<https://wiki.eolab.de/> - **HSRW EOLab Wiki**

Permanent link:

<https://wiki.eolab.de/doku.php?id=projects:rfid:start&rev=1741781269>

Last update: **2025/03/12 13:07**

