

# Solar Panel Project

**Place:** Green FabLab, Kamp-Lintfort.

## Photovoltaic (PV) modules:

IBC PySol 270 GX4

Item number = 2204400014

### Physical data:

Module dimensions (mm) = 1654 x 989 x 40

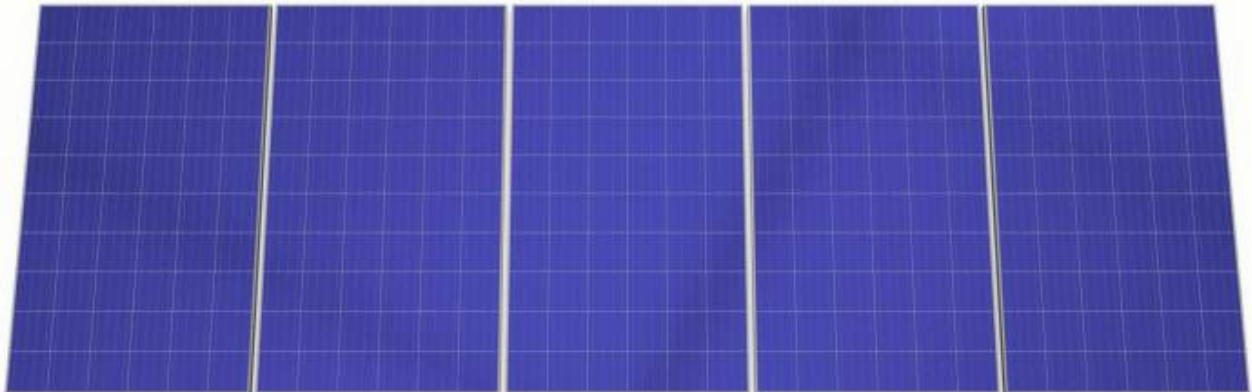
Module weight = 18.2Kg

PV modules available = 20units

The current idea is to install two systems:

- Fixed system: 2 sets of 5 PV modules each on top of the roof, using an Angle mounting system.
- Mobile system: 2 sets of 5 PV modules each on the green area, using a Flat mounting system on mobile platform mechanism that allows us to tilt the PV modules.

Set of 5 vertical PV modules in a row - arrangement:



## Photovoltaic system layout

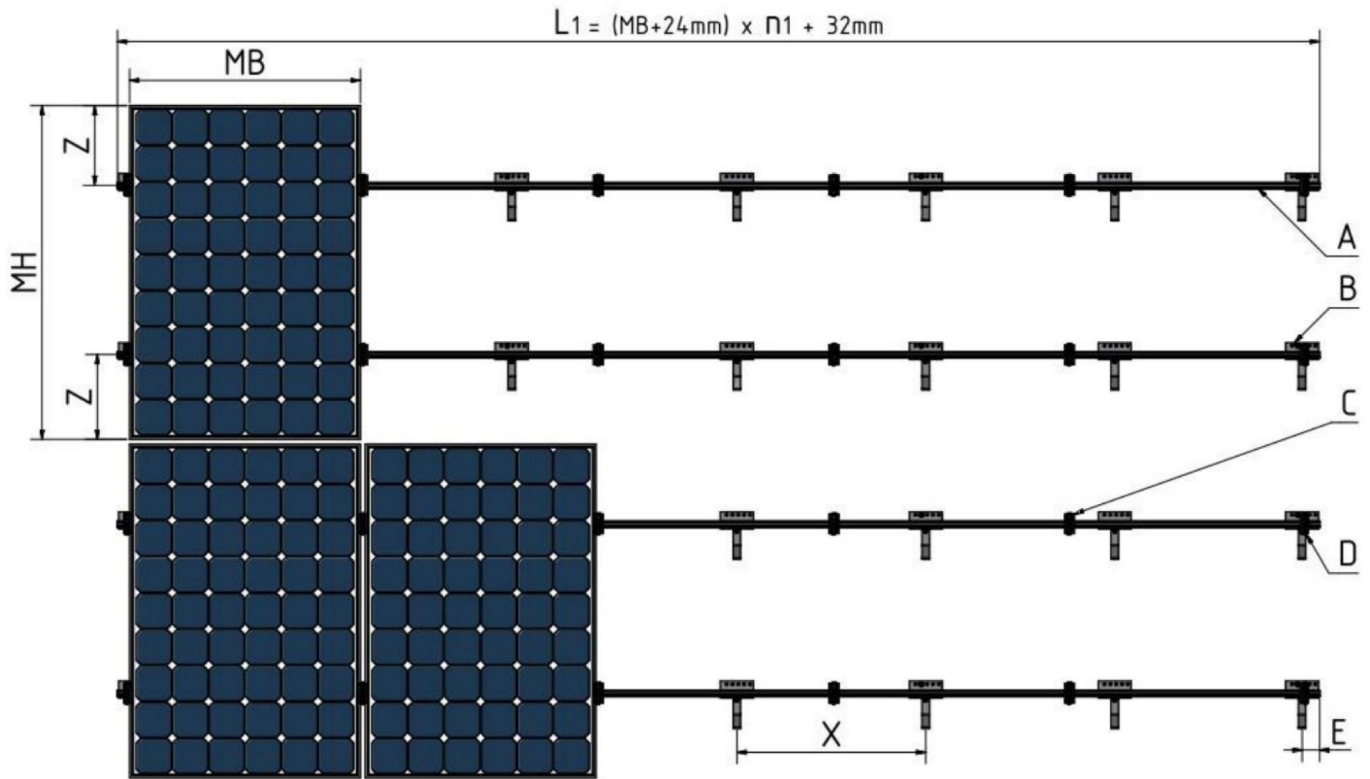


Image: Layout of the IBC TopFix 200 mounting system. taken from the

Installation instructions - IBC TopFix 200

	Description
$L = (M.B + 24 \text{ mm}) \times n + 32 \text{ mm}$	Carrier rail length = (M.B + 24 mm) × number of modules per row + 32 mm
M.B	Module width
M.H	Module height
A	Type TF50+/TF50m/TF60 carrier rail
B	Roof hooks
C	Middle clamp
D	Outside clamp
E	Max. 400mm
X	X - selected fixing interval (dimensioned using PV Manager software)
Z	Max. ¼ of M.H (please observe module manufacturer specifications)

Note: "Carrier rail" is also called "Support rail" in the manual.

## Mobile system

## Flat mounting system

### List of components

According to the

Installation instructions - IBC TopFix 200

:

Support rail length = (M.B + 24 mm) × number of modules per row + 32 mm = (989mm + 24 mm) × 5 + 32 mm = 1013 x 5 + 32 mm = 5097mm

There are two lengths: 5200mm and 2100mm, then we use the 5200mm one.

Item	Amount per set	Item number
Support rail TF60, 5200mm	2	6800100020
End cap Adapter (33-46mm)	4	6700400161
Rail end cap	4	6700300045
Middle Clamp (G4 33-46mm)	12	6700400144
Socket cap screw (M8x16 A2)	20	6900100013
Universal connector AeroFlat	8 (depending on the platform)	6700300035

From:

<https://wiki.eolab.de/> - **HSRW EOLab Wiki**

Permanent link:

[https://wiki.eolab.de/doku.php?id=solar\\_panel:start](https://wiki.eolab.de/doku.php?id=solar_panel:start)

Last update: **2021/08/24 17:35**

