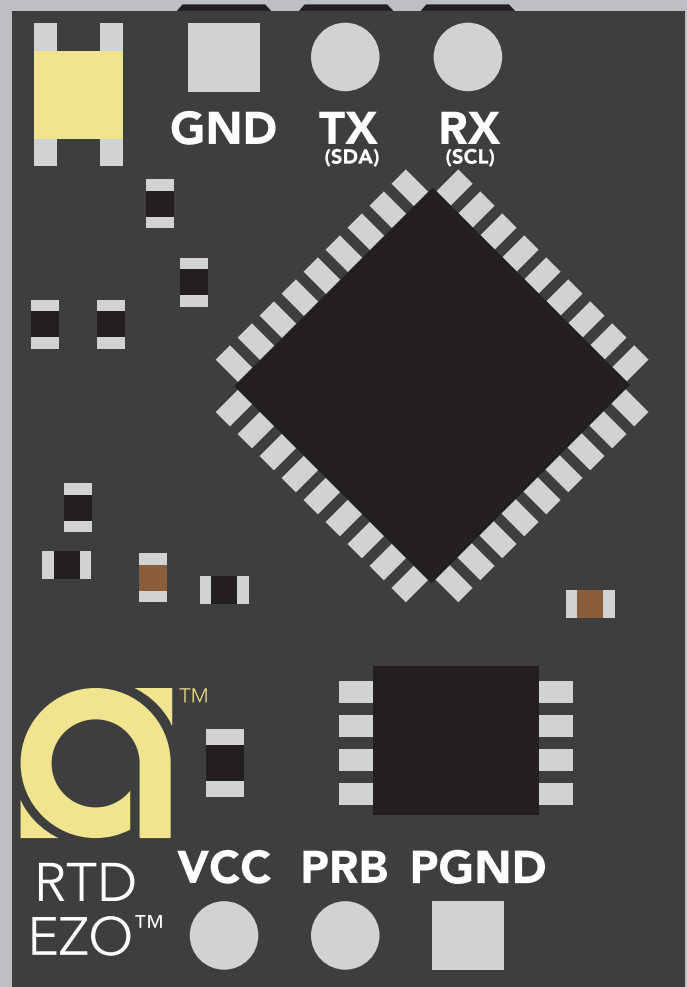


EZO-RTDTM

Embedded Temperature Circuit

Reads	Temperature
Range	-126.000 °C – 1254 °C
Resolution	0.001
Accuracy	+/- (0.1 + 0.0017 x °C)
Response time	1 reading per sec
Supported probes	Any type & brand PT-100 or PT-1000 RTD
Calibration	Single point
Temperature output	°C, °K, or °F
Data protocol	UART & I²C
Default I ² C address	102 (0x66)
Operating voltage	3.3V – 5.5V
Data format	ASCII
Onboard Data Logger	50 Readings



Electrical Isolation not needed



✓ Available data protocols

UART

Default

I²C

✗ Unavailable data protocols

SPI

Analog

RS-485

Mod Bus

4–20mA

STOP

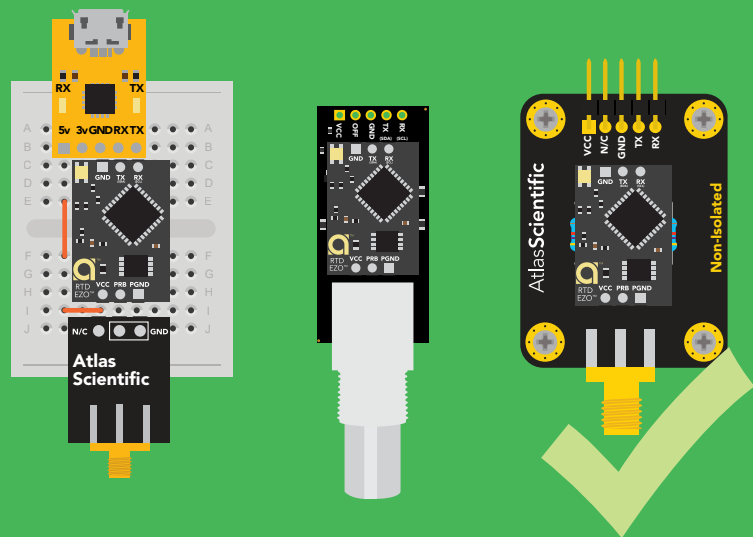
SOLDERING THIS DEVICE VOIDS YOUR WARRANTY.

Are there specific soldering instructions? Yes, see page 66.

Can you make a warranty claim after soldering? No.

If you have not used this product before; Observe how a properly working sensor behaves *BEFORE* embedding it into your PCB.

Get this device working using one of these methods first.



Do not embed before you have experience with this sensor.

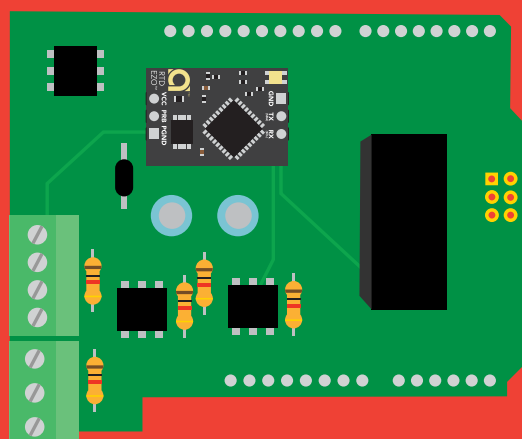


Table of contents

Available data protocols	2	Correct wiring	7
Circuit dimensions	5	Default state	8
Power consumption	5	Circuit footprint	68
Absolute max ratings	5	Datasheet change log	69
Electrical Isolation	6	Warranty	72
Using other brand PT-100/PT-1000	61		
On board data logger	63		
Calibration theory	64		

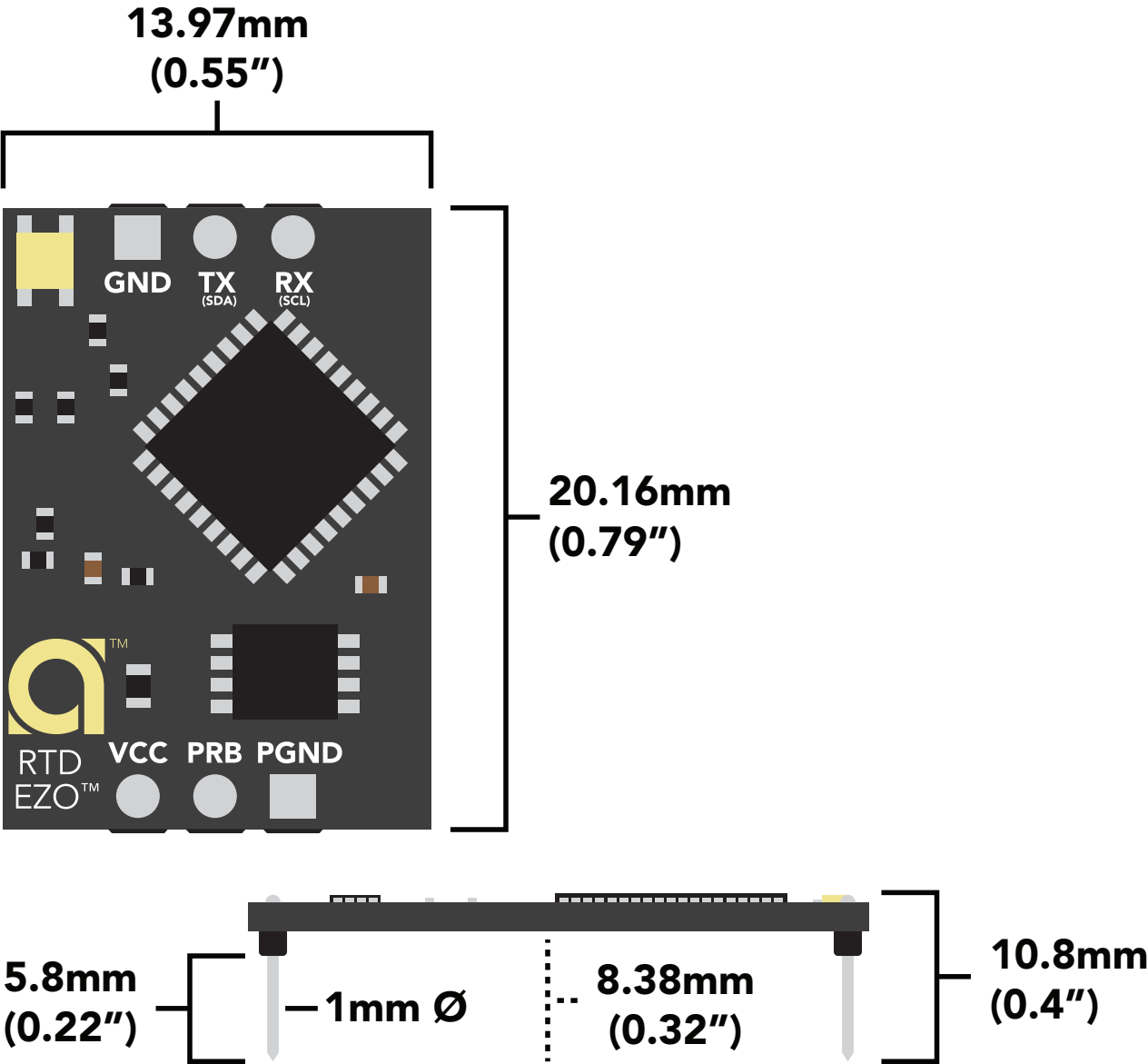
UART

UART mode	9
LED color definition	10
Receiving data from device	11
Sending commands to device	12
UART quick command page	13
LED control	14
Find	15
Continuous reading mode	16
Single reading mode	17
Calibration	18
Export calibration	19
Import calibration	20
Temperature scale	21
Enable/disable data logger	22
Memory recall	23
Memory clear	24
Naming device	25
Device information	26
Response codes	27
Reading device status	28
Sleep mode/low power	29
Change baud rate	30
Protocol lock	31
Factory reset	32
Change to I ² C mode	33
Manual switching to I ² C	34

I²C

I ² C mode	36
Sending commands	37
Requesting data	38
Response codes	39
LED color definition	40
I²C quick command page	41
LED control	42
Find	43
Taking reading	44
Calibration	45
Export calibration	46
Import calibration	47
Temperature scale	48
Enable/disable data logger	49
Memory recall	50
Memory clear	51
Naming device	52
Device information	53
Reading device status	54
Sleep mode/low power	55
Protocol lock	56
I ² C address change	57
Factory reset	58
Change to UART mode	59
Manual switching to UART	60

EZO™ circuit dimensions



Power consumption

	LED	MAX	STANDBY	SLEEP
5V	ON	16 mA	15.4 mA	0.4 mA
	OFF	15.3 mA	15 mA	
3.3V	ON	14.3 mA	13.8 mA	0.09 mA
	OFF	14 mA	13.6 mA	

Absolute max ratings

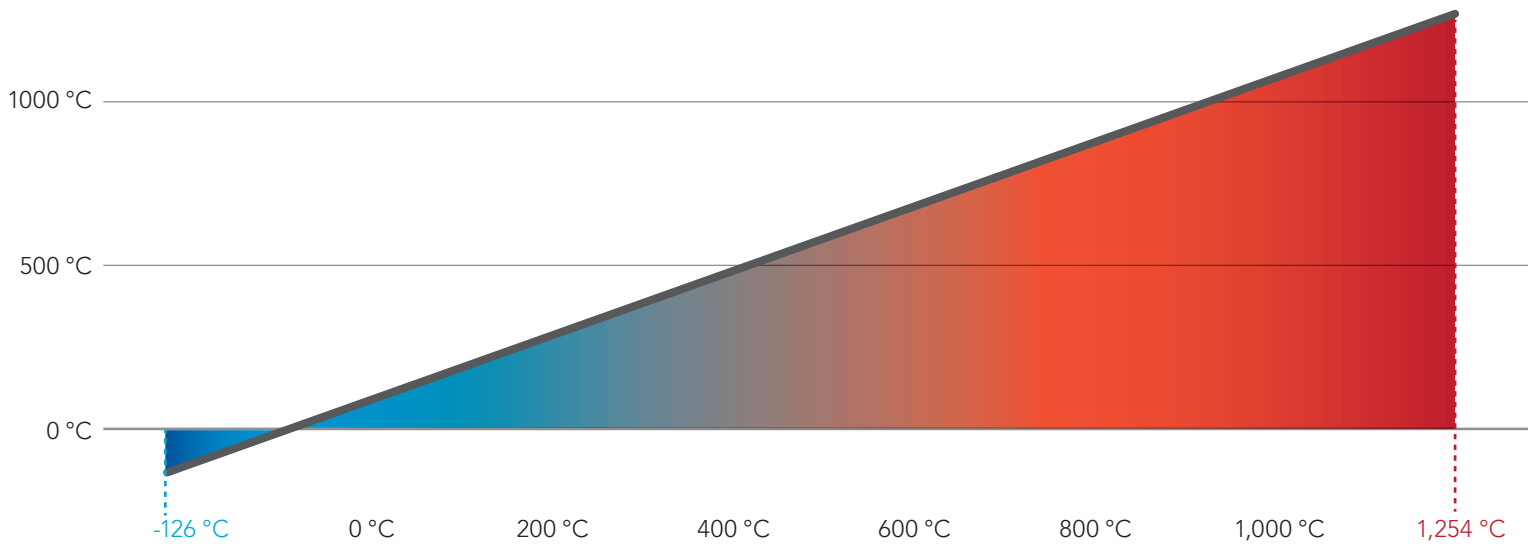
Parameter	MIN	TYP	MAX
Storage temperature (EZO™ RTD)	-65 °C		125 °C
Operational temperature (EZO™ RTD)	-40 °C	25 °C	85 °C
VCC	3.3V	5V	5.5V

Electrical isolation

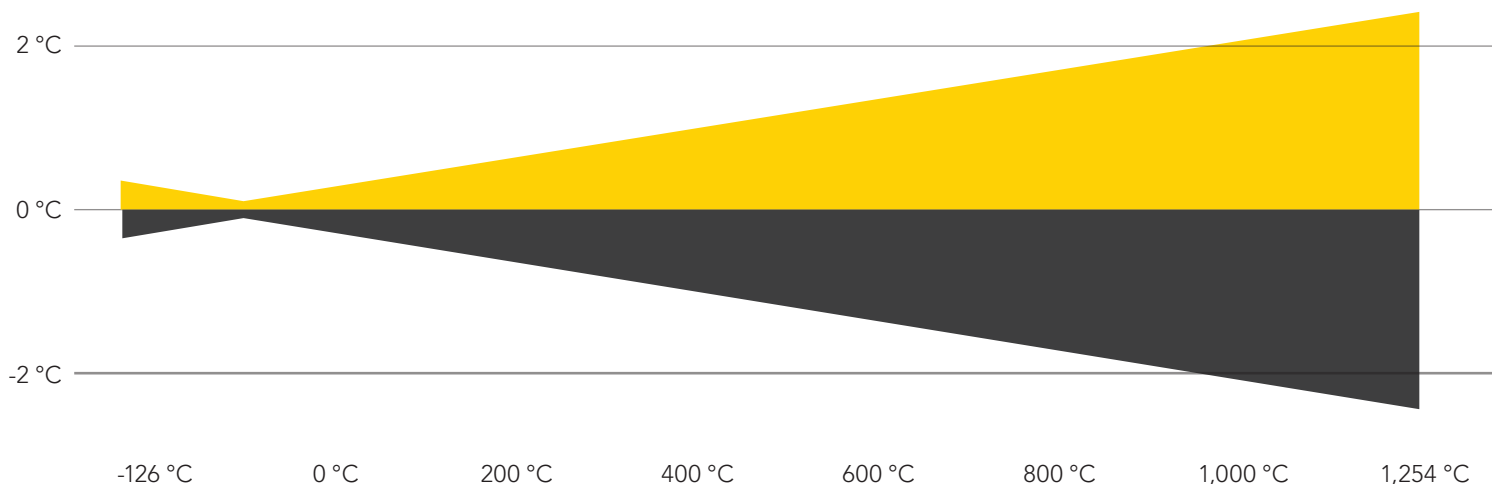
The measurement process of the EZO-RTD involves detecting resistance changes, the potential for noise to affect the accuracy of this measurement is extremely low.

Electrical isolation is often necessary to prevent noise from external sources (*other probes & devices*) from contaminating the readings. However; **The design and method of measurement used by the EZO-RTD are inherently stable, making electrical isolation unnecessary for accurate temperature readings.**

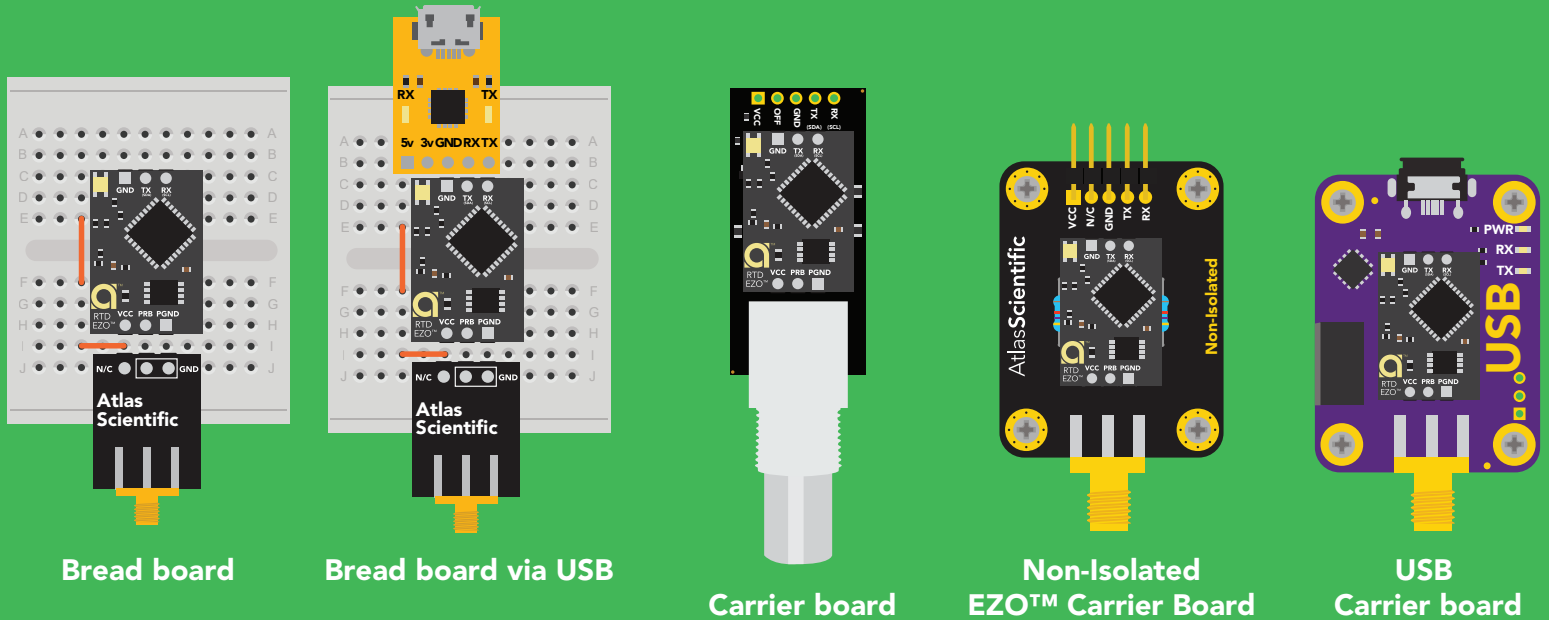
EZO-RTD™ temperature sensing range



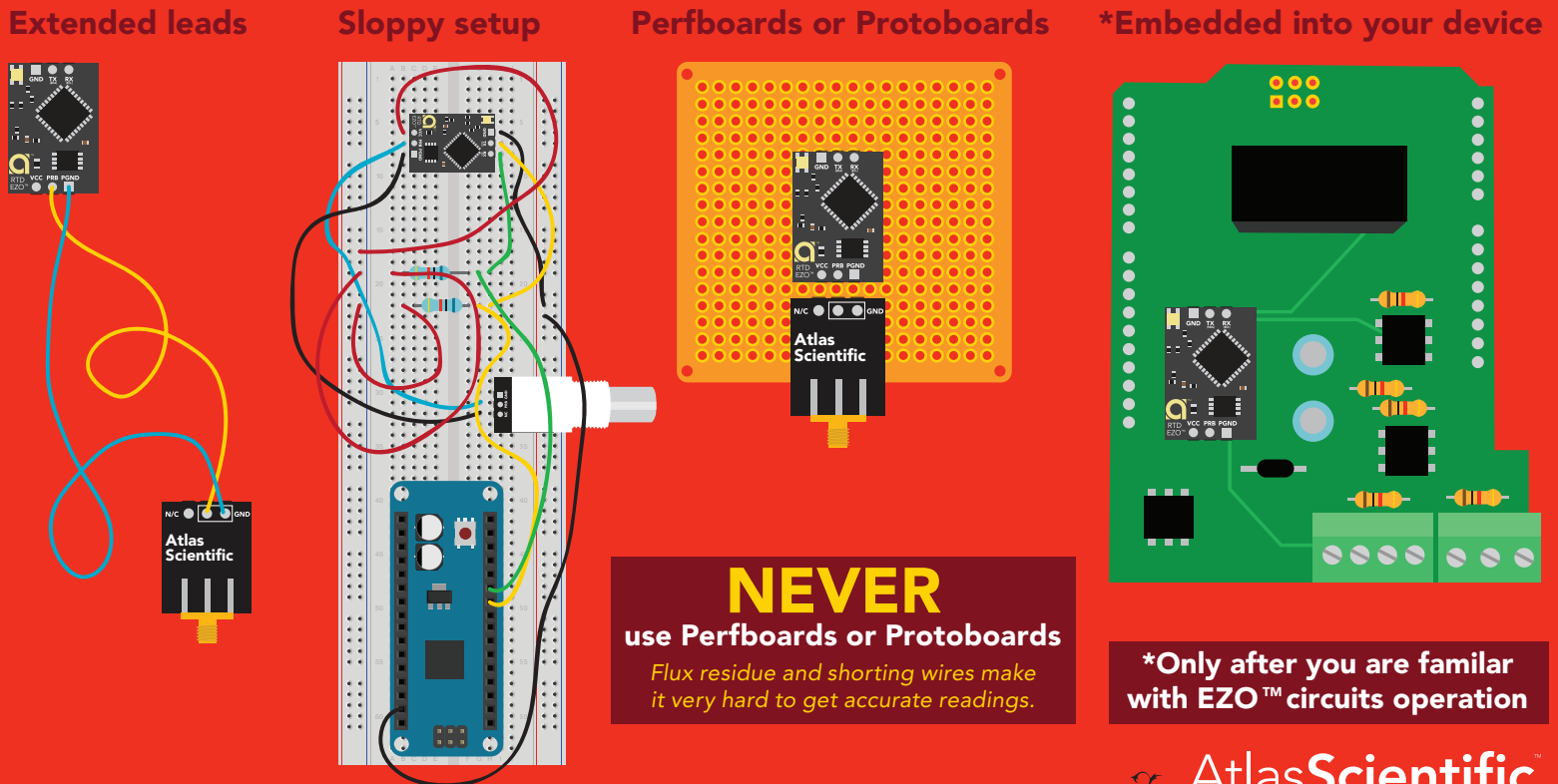
EZO-RTD™ temperature sensing accuracy



✓ Correct wiring



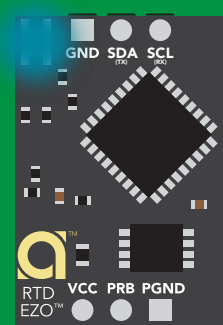
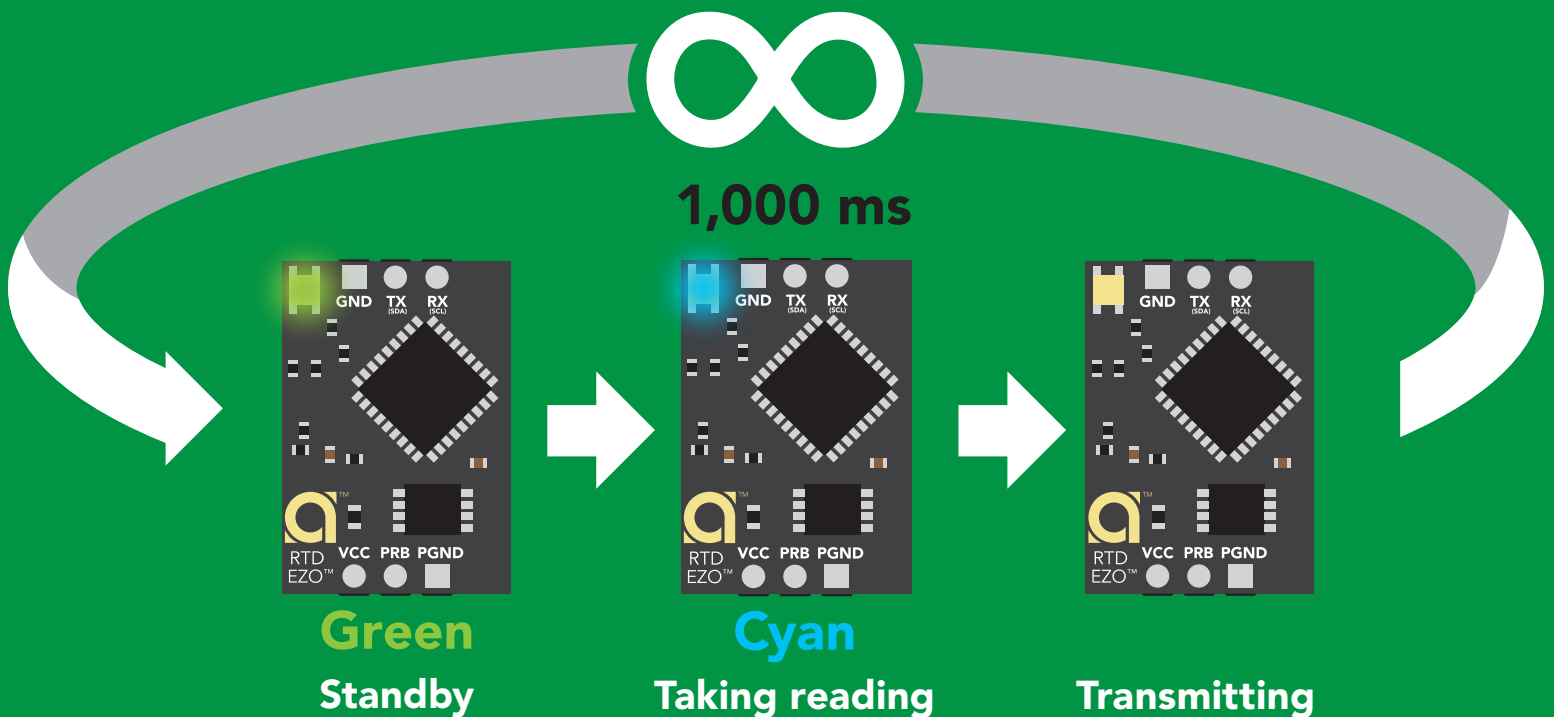
X Incorrect wiring



Default state

UART mode

Baud	9,600	With probe	ttt.ttt
Temperature	°C	Without probe	-1023.000
Readings	continuous	LED	on
Speed	1 reading per second		



Solid Blue LED

in I²C mode
Not UART ready

UART mode

8 data bits
1 stop bit

no parity
no flow control

Baud 300
1,200
2,400
9,600 default
19,200
38,400
57,600
115,200

RX
Data in



TX
Data out

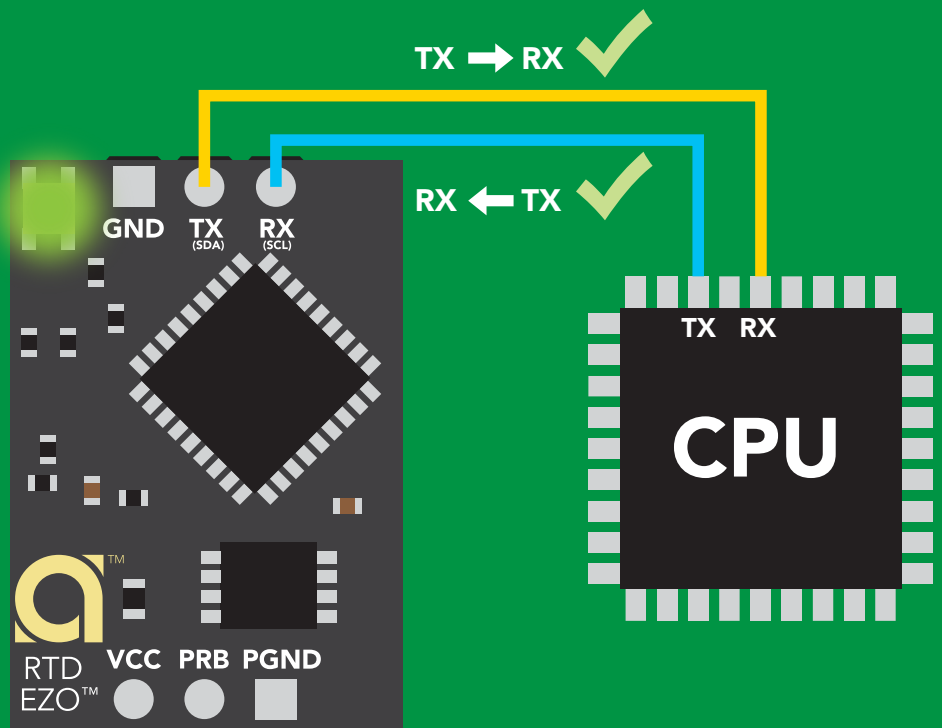


Vcc 3.3V – 5.5V

0V



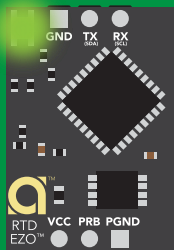
0V



Data format

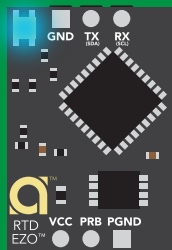
Reading	temperature	Data type	floating point
Units	°C, °K, or °F	Decimal places	3
Encoding	ASCII	Smallest string	4 characters
Format	string	Largest string	40 characters
Terminator	carriage return		

LED color definition



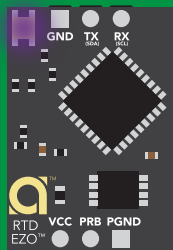
Green

UART standby



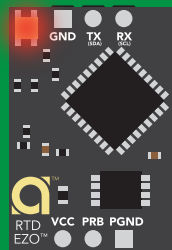
Cyan

Taking reading



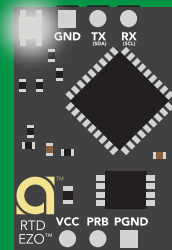
Purple

Changing
baud rate



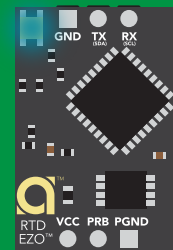
Red

Command
not understood



White

Find



Blue

I2C standby

5V

LED ON
+0.4 mA

3.3V

+0.2 mA

Settings that are retained if power is cut

- Baud rate
- Calibration
- Continuous mode
- Temperature scale
- Device name
- Enable/disable response codes
- Hardware switch to I²C mode
- LED control
- Protocol lock
- Software switch to I²C mode

Settings that are **NOT** retained if power is cut

- Find
- Sleep mode

Receiving data from device

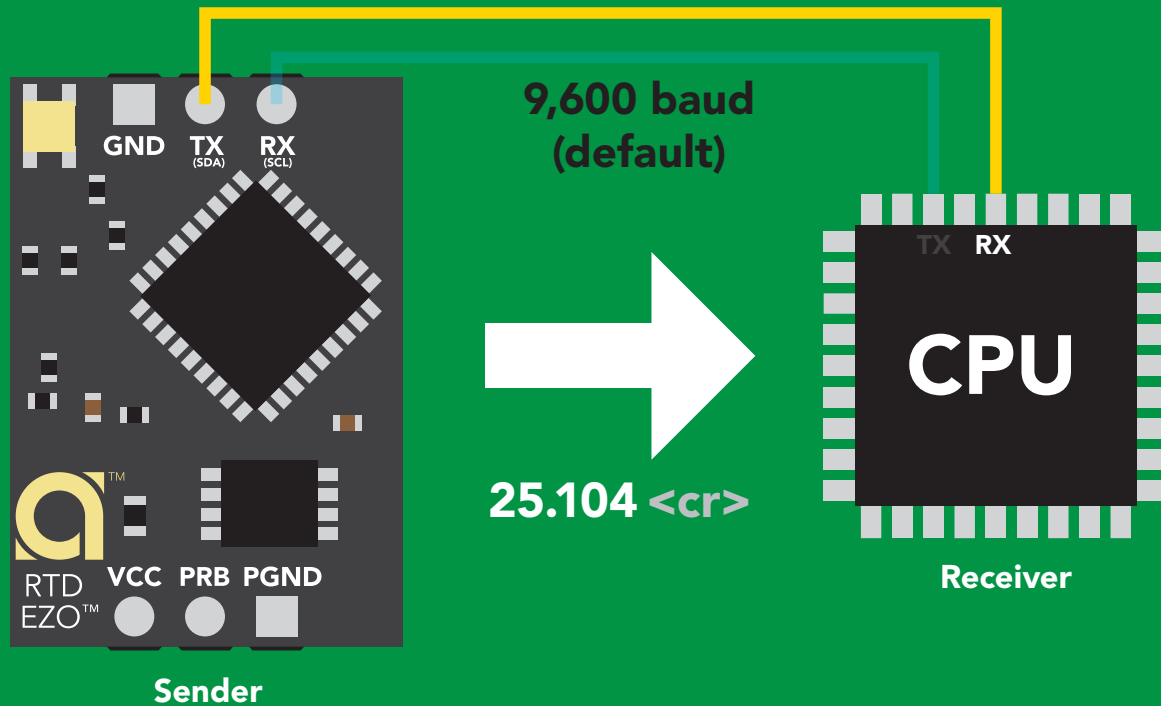
2 parts

ASCII data string

Command

Carriage return <cr>

Terminator



Advanced

ASCII: 2 5 . 1 0 4 <cr>

Hex: 32 35 2E 31 30 34 0D

Dec: 50 53 46 49 48 52 13

Sending commands to device

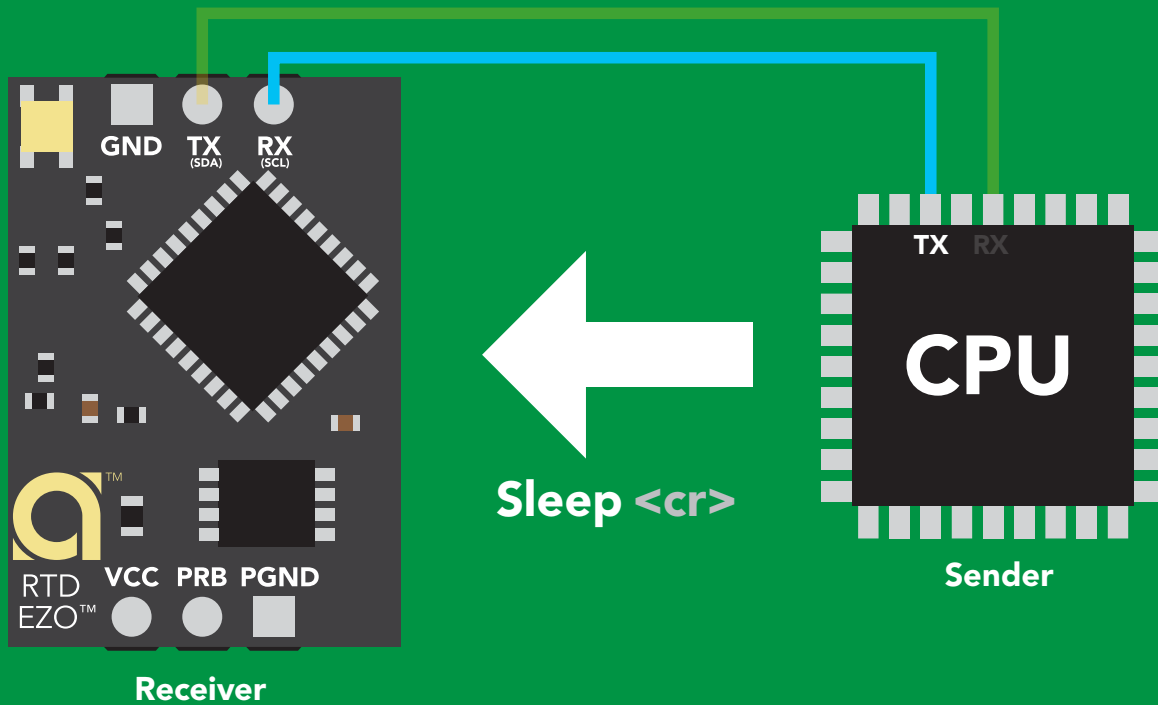
2 parts

Command (not case sensitive)

ASCII data string

Carriage return <cr>

Terminator



Advanced

ASCII: **S** **I** **e** **e** **p** **<cr>**

Hex: **53** **6C** **65** **65** **70** **0D**

Dec: **83** **108** **101** **101** **112** **13**

UART mode

command quick reference

All commands are ASCII strings or single ASCII characters.

Command	Function		Default state
Baud	change baud rate	pg. 30	9,600
C	enable/disable continuous reading	pg. 16	enabled
Cal	performs calibration	pg. 18	n/a
D	enable/disable data logger	pg. 22	disabled
Export	export calibration	pg. 19	n/a
Factory	enable factory reset	pg. 32	n/a
Find	finds device with blinking white LED	pg. 15	n/a
i	device information	pg. 26	n/a
I2C	change to I ² C mode	pg. 33	not set
Import	import calibration	pg. 20	n/a
L	enable/disable LED	pg. 14	enabled
M	memory recall/clear	pg. 23	n/a
Name	set/show name of device	pg. 25	not set
Plock	enable/disable protocol lock	pg. 31	disabled
R	returns a single reading	pg. 17	n/a
S	temperature scale (°C, °K, °F)	pg. 21	celsius
Sleep	enter sleep mode/low power	pg. 29	n/a
Status	retrieve status information	pg. 28	n/a
*OK	enable/disable response codes	pg. 27	enable

LED control

Command syntax

L,1 <cr> LED on **default**

L,0 <cr> LED off

L,? <cr> LED state on/off?

Example

Response

L,1 <cr>

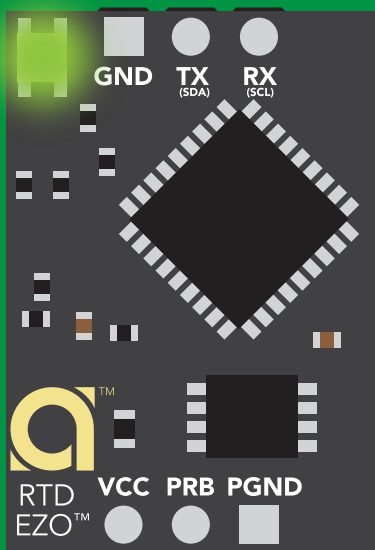
*OK <cr>

L,0 <cr>

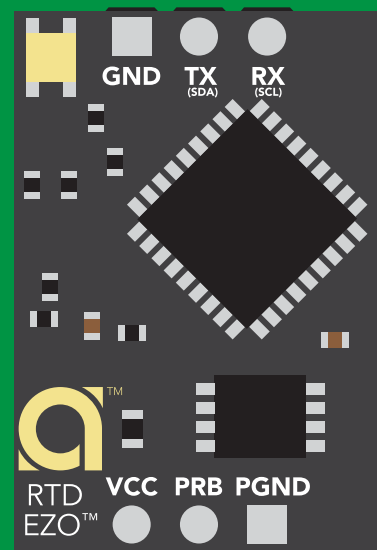
*OK <cr>

L,? <cr>

?L,1 <cr> **or** ?L,0 <cr>
*OK <cr>



L,1



L,0

Find

Command syntax

This command will disable continuous mode
Send any character or command to terminate find.

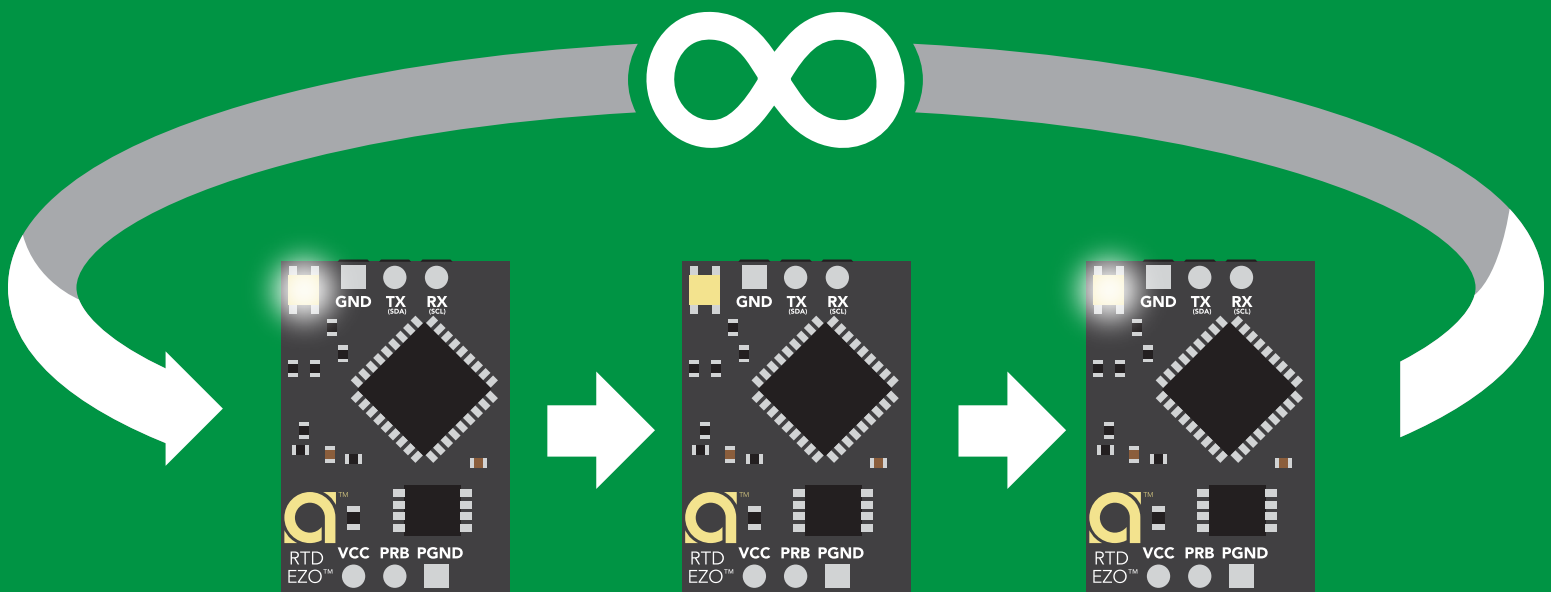
Find <cr> LED rapidly blinks white, used to help find device

Example

Find <cr>

Response

***OK** <cr>



Continuous reading mode

Command syntax

- C,1** <cr> enable continuous readings once per second **default**
- C,n** <cr> continuous readings every n seconds (n = 2 to 99 sec)
- C,0** <cr> disable continuous readings
- C,?** <cr> continuous reading mode on/off?

Example

Response

C,1 <cr>

***OK** <cr>
°C (1 sec) <cr>
°C (2 sec) <cr>
°C (n sec) <cr>

C,30 <cr>

***OK** <cr>
°C (30 sec) <cr>
°C (60 sec) <cr>
°C (90 sec) <cr>

C,0 <cr>

***OK** <cr>

C,? <cr>

?C,1 <cr> **or** **?C,0** <cr> **or** **?C,30** <cr>
***OK** <cr>

Single reading mode

Command syntax

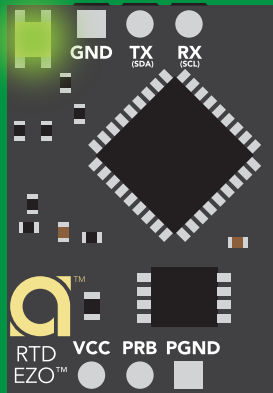
R <cr> takes single reading

Example

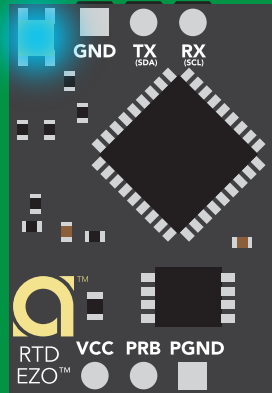
R <cr>

Response

25.104 <cr>
***OK** <cr>

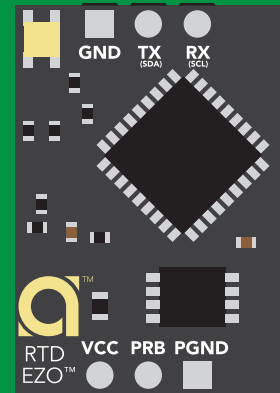


Green
Standby



Cyan

Taking reading



Transmitting



600 ms

Calibration

Command syntax

The EZO™ RTD circuit uses single point calibration.

Cal,t <cr> t = any temperature
Cal,clear <cr> delete calibration data
Cal,? <cr> device calibrated?

Example

Response

Cal,100.00 <cr>

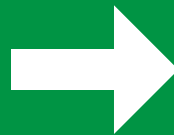
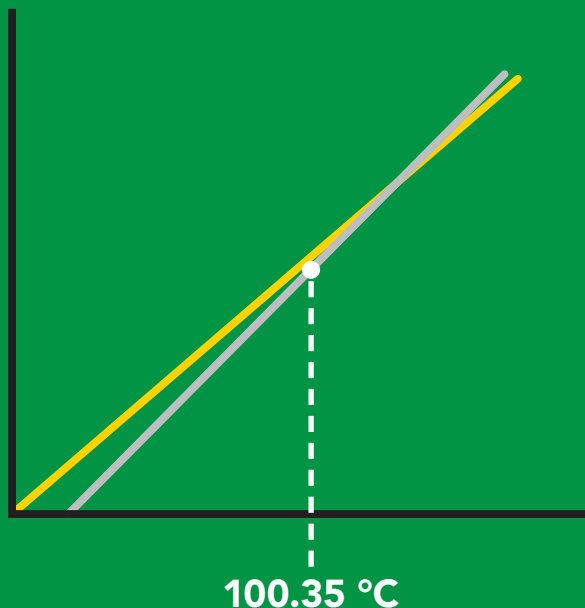
*OK <cr>

Cal,clear <cr>

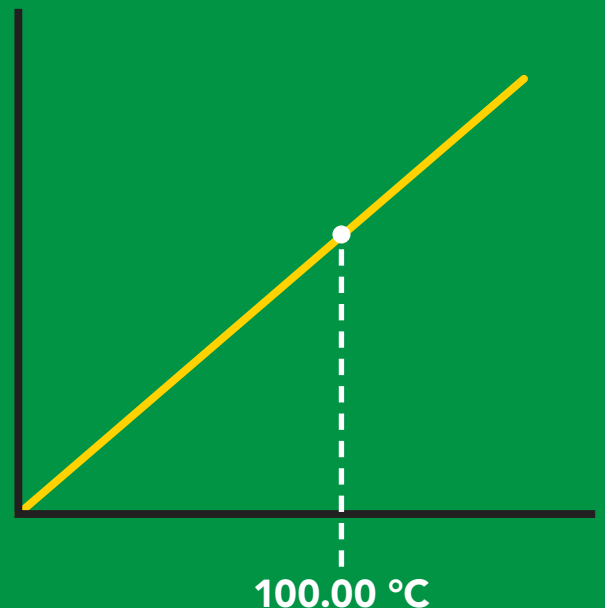
*OK <cr>

Cal,? <cr>

?Cal,1 <cr> or ?Cal,0 <cr>
*OK <cr>



Cal,100.00 <cr>



Export calibration

Command syntax

Export: Use this command to download calibration settings

Export,? <cr> calibration string info

Export <cr> export calibration string from calibrated device

Example

Response

Export,? <cr>

10,120 <cr>

Response breakdown

10, 120

of strings to export

of bytes to export

Export strings can be up to 12 characters long,
and is always followed by <cr>

Export <cr>

59 6F 75 20 61 72 <cr> **(1 of 10)**

Export <cr>

65 20 61 20 63 6F <cr> **(2 of 10)**

(7 more)

⋮

Export <cr>

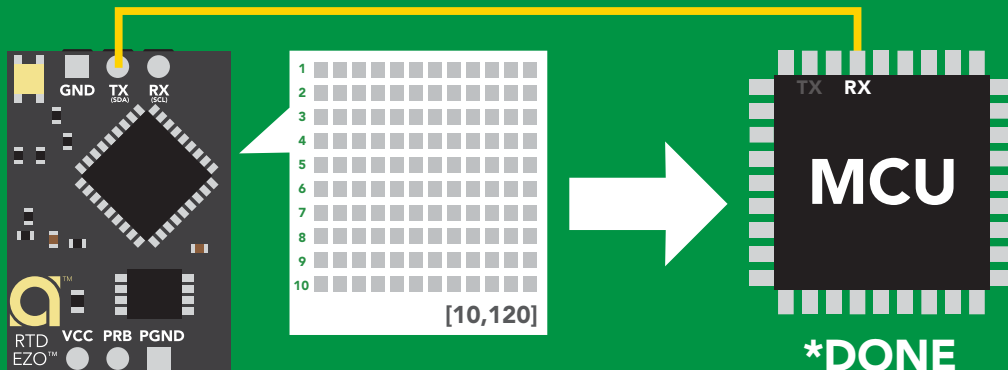
6F 6C 20 67 75 79 <cr> **(10 of 10)**

Export <cr>

***DONE**

Disabling *OK simplifies this process

Export <cr>



Import calibration

Command syntax

Import: Use this command to upload calibration settings to one or more devices.

Import,n <cr> import calibration string to new device

Example

Import, 59 6F 75 20 61 72 <cr> (1 of 10)

Import, 65 20 61 20 63 6F <cr> (2 of 10)

⋮

Import, 6F 6C 20 67 75 79 <cr> (10 of 10)

Response

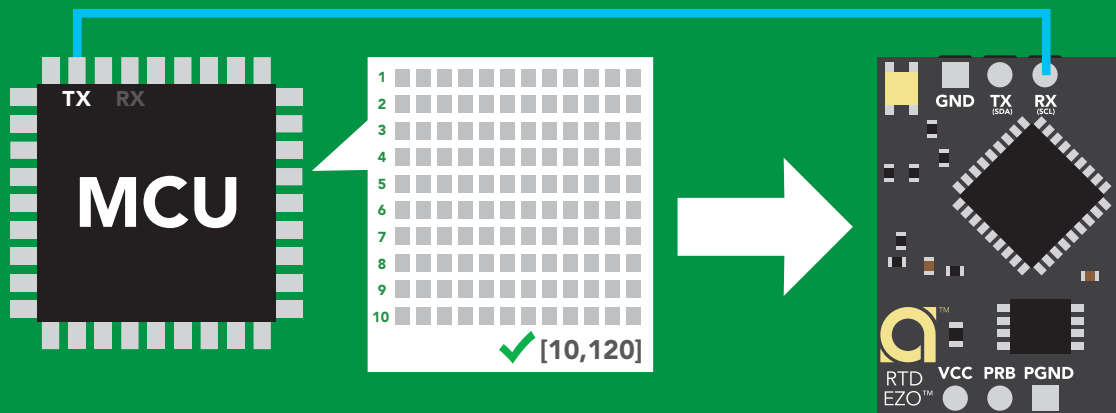
*OK <cr>

*OK <cr>

⋮

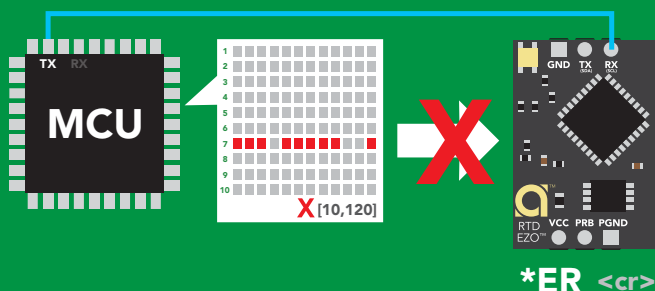
*OK <cr>

Import,n <cr>



*OK <cr>

system will reboot



*ER <cr>

* If one of the imported strings is not correctly entered, the device will not accept the import, respond with *ER and reboot.

Temperature scale (°C, °K, °F)

Command syntax

S,c <cr> celsius **default**
S,k <cr> kelvin
S,f <cr> fahrenheit
S,? <cr> temperature scale?

Example

Response

S,c <cr>

***OK** <cr>

S,k <cr>

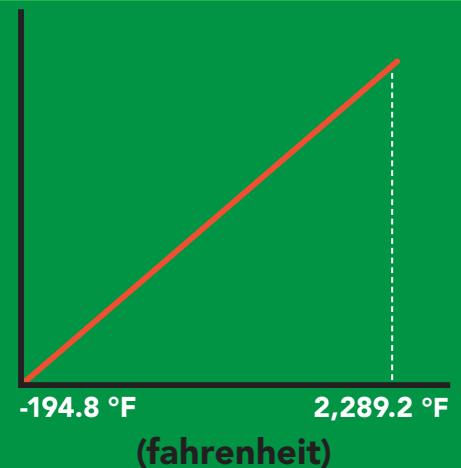
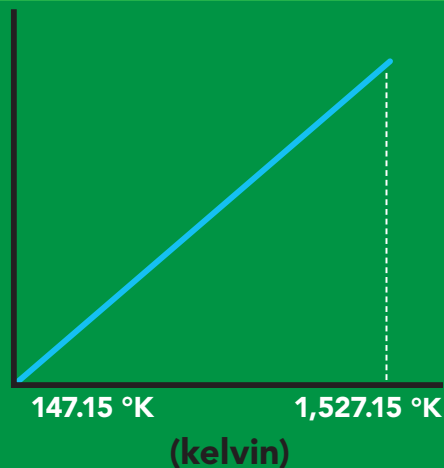
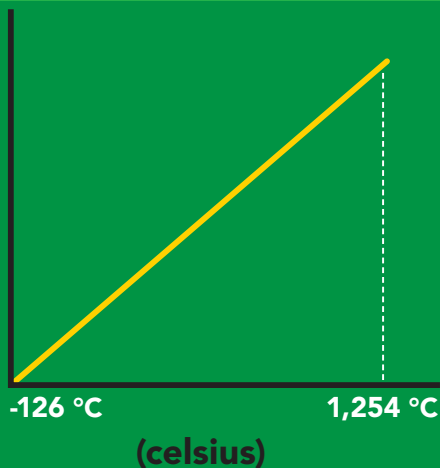
***OK** <cr>

S,f <cr>

***OK** <cr>

S,? <cr>

?S,c <cr> **or** **?S,k** <cr> **or** **?S,f** <cr>
***OK** <cr>



Enable/disable data logger

Command syntax

The time period (n) is in 10 second intervals and can be any value from 1 to 32,000.

D,n <cr> n = (n x 10 seconds)

D,0 <cr> disable **default**

D,? <cr> data logger storage interval?

Example

Response

D,6 <cr>

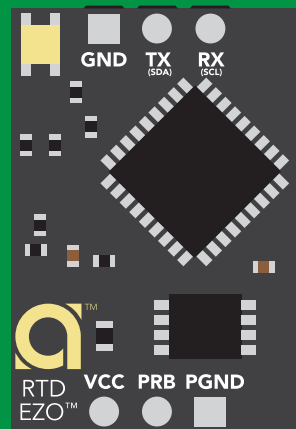
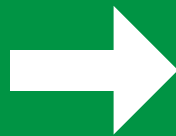
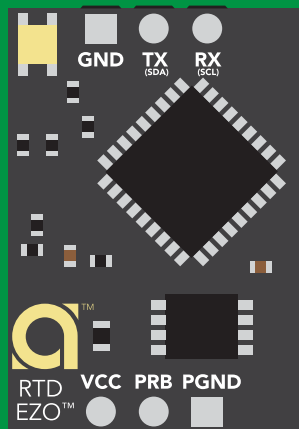
*OK <cr>

D,0 <cr>

*OK <cr>

D,? <cr>

?D,6 <cr>
*OK <cr>



D,6



60 seconds

* <cr>

* indicates reading has
been logged

Memory recall

Command syntax

Disable data logger to recall memory.

M <cr> recall 1 sequential stored reading

M,all <cr> recall all readings in a CSV string

M,? <cr> display memory location of last stored reading

Example

Response

M <cr>

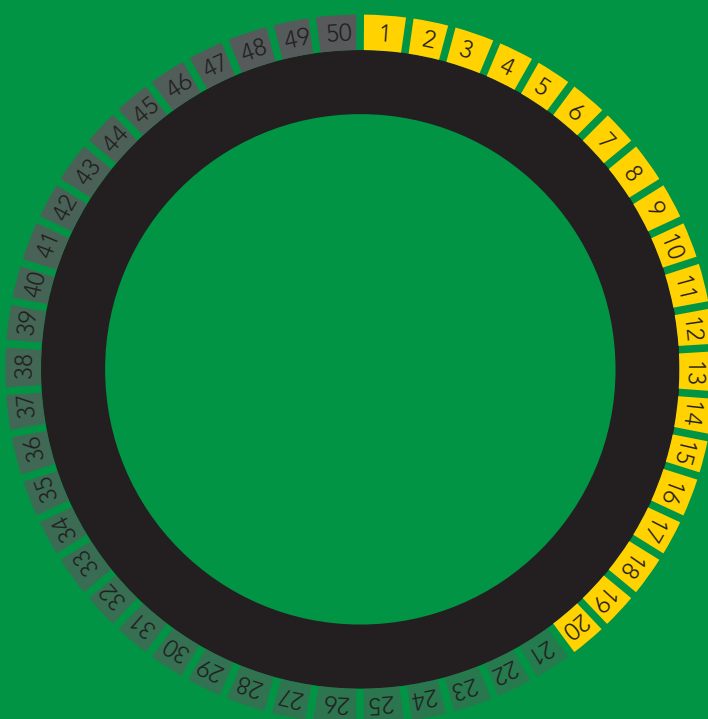
1,100.00 <cr> 2,104.00 <cr> *OK <cr>

M,all <cr>

100.00,104.00,108.00,112.00 <cr>
Oldest Newest

M,? <cr>

?M,4 <cr>
*OK <cr>



Memory clear

Command syntax

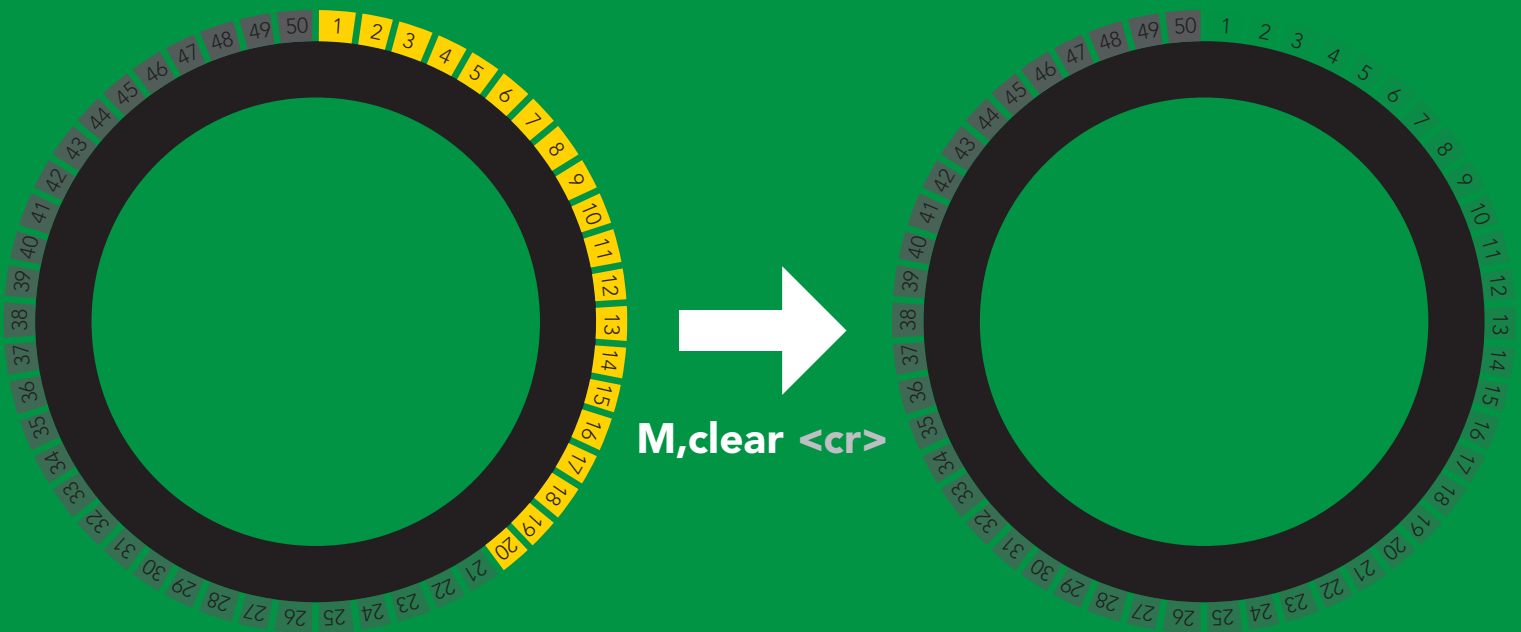
M,clear <cr> clear all stored memory

Example

M,clear <cr>

Response

***OK** <cr>



Reading device status

Command syntax

Status <cr> voltage at Vcc pin and reason for last restart

Example

Status <cr>

Response

?Status,P,5.038 <cr>
*OK <cr>

Response breakdown

?Status,	P,	5.038
	↑	↑
	Reason for restart	Voltage at Vcc

Restart codes

P	powered off
S	software reset
B	brown out
W	watchdog
U	unknown

Sleep mode/low power

Command syntax

Send any character or command to awaken device.

Sleep <cr> enter sleep mode/low power

Example

Response

Sleep <cr>

***OK** <cr>

***SL** <cr>

Any command

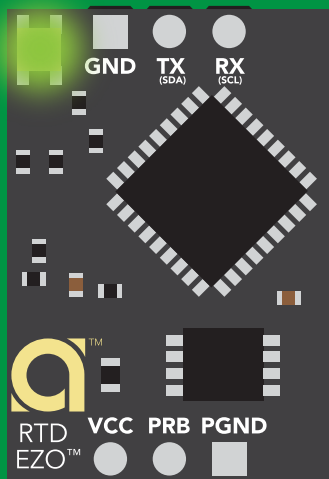
***WA** <cr> wakes up device

5V

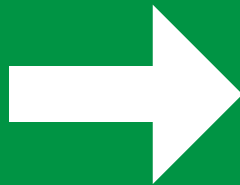
STANDBY	SLEEP
15.40 mA	0.4 mA

3.3V

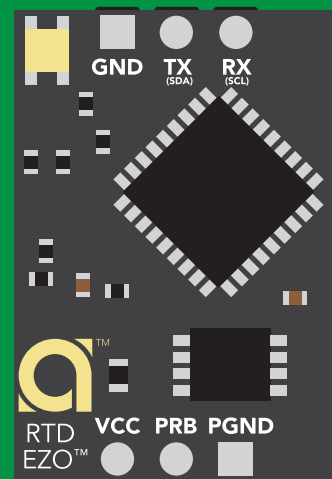
13.80 mA	0.09 mA
-----------------	----------------



Standby
15.40 mA



Sleep <cr>



Sleep
3.00 mA

Change baud rate

Command syntax

Baud,n <cr> change baud rate

Example

Baud,38400 <cr>

Response

*OK <cr>

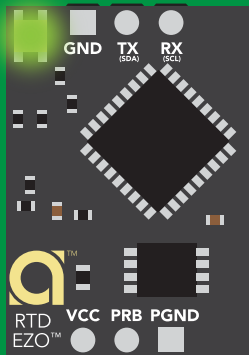
Baud,? <cr>

?Baud,38400 <cr>

*OK <cr>

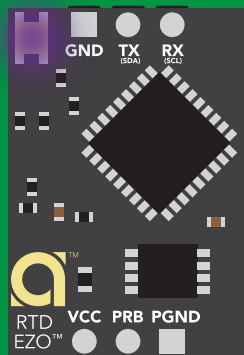
n = [

- 300
- 1200
- 2400
- 9600 default**
- 19200
- 38400
- 57600
- 115200



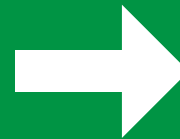
Standby

Baud,38400 <cr>

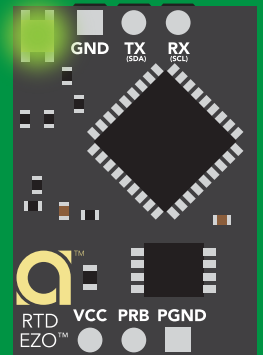


Changing
baud rate

*OK <cr>



(reboot)



Standby

Protocol lock

Command syntax

Locks device to UART mode.

Plock,1 <cr> enable Plock

Plock,0 <cr> disable Plock **default**

Plock,? <cr> Plock on/off?

Example

Plock,1 <cr>

*OK <cr>

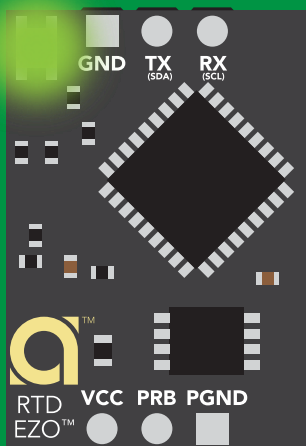
Plock,0 <cr>

*OK <cr>

Plock,? <cr>

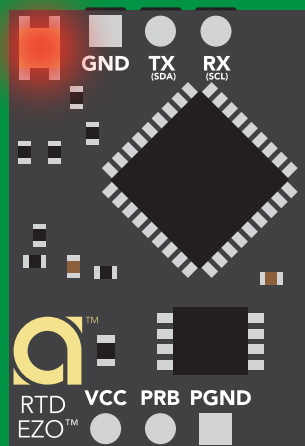
?Plock,1 <cr> **or** ?Plock,0 <cr>

Plock,1



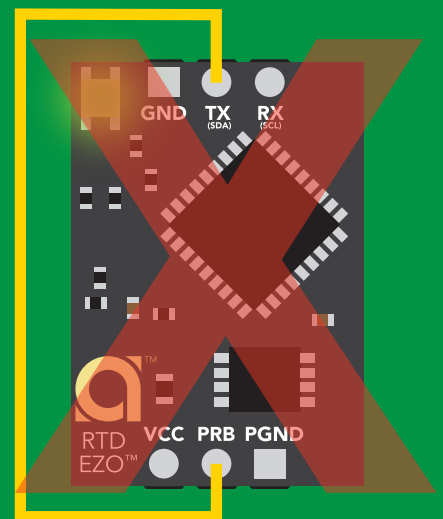
*OK <cr>

I2C,100



cannot change to I²C
*ER <cr>

Short



cannot change to I²C

Factory reset

Command syntax

Clears calibration
LED on
"*OK" enabled
Clears data logger

Factory <cr> enable factory reset

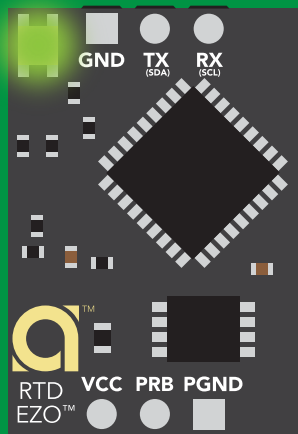
Example

Response

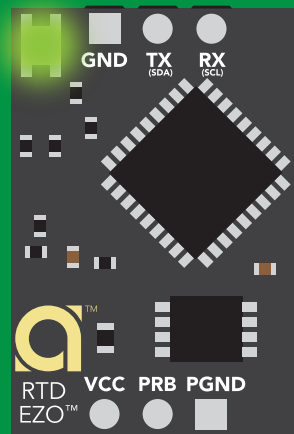
Factory <cr>

*OK <cr>

Factory <cr>



*OK <cr>



*RS <cr>

*RE <cr>

Baud rate will not change

Change to I²C mode

Command syntax

Default I²C address 102 (0x66)

I2C,n <cr> sets I²C address and reboots into I²C mode

n = any number 1 – 127

Example

Response

I2C,100 <cr>

*OK (reboot in I²C mode)

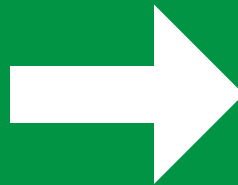
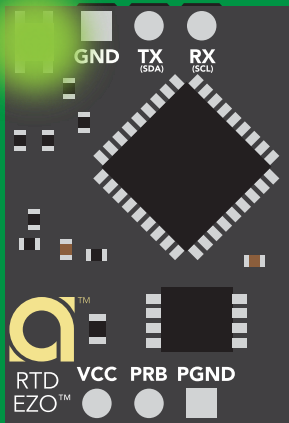
Wrong example

Response

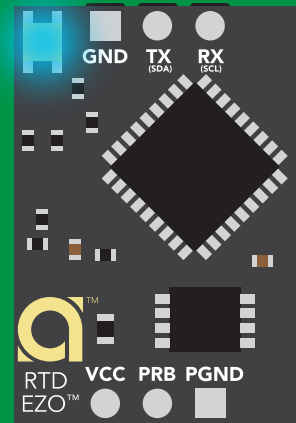
I2C,139 <cr> n ≠ 127

*ER <cr>

I2C,100



(reboot)



Green
*OK <cr>

Blue
now in I²C mode

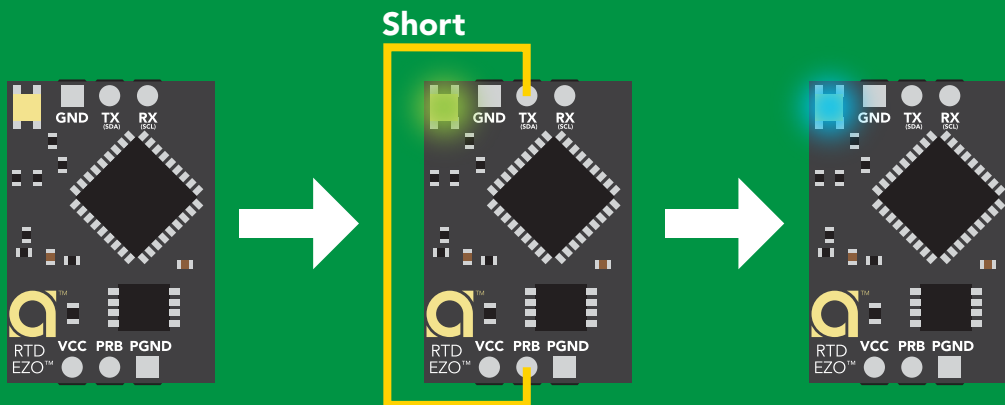
Manual switching to I²C

- Disconnect ground (power off)
- Disconnect TX and RX
- Connect TX to PRB
- Confirm RX is disconnected
- Connect ground (power on)
- Wait for LED to change from **Green** to **Blue**
- Disconnect ground (power off)
- Reconnect all data and power

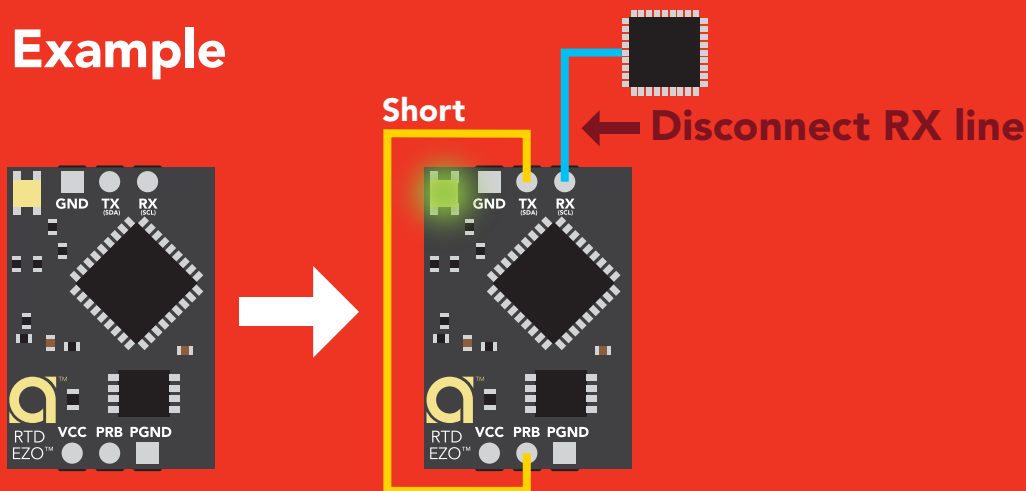
Connecting TX to PRB only works for the EZO-RTD™ and the EZO-FLO™ circuits

Manually switching to I²C will set the I²C address to 102 (0x66)

Example



Wrong Example



I²C mode

The I²C protocol is **considerably more complex** than the UART (RS-232) protocol. Atlas Scientific assumes the embedded systems engineer understands this protocol.

To set your EZO[™] device into I²C mode [click here](#)

Settings that are retained if power is cut

- Calibration
- Change I²C address
- Temperature scale
- Hardware switch to UART mode
- LED control
- Protocol lock
- Software switch to UART mode

Settings that are **NOT** retained if power is cut

- Find
- Sleep mode

I²C mode

I²C address (0x01 – 0x7F)
102 (0x66) default

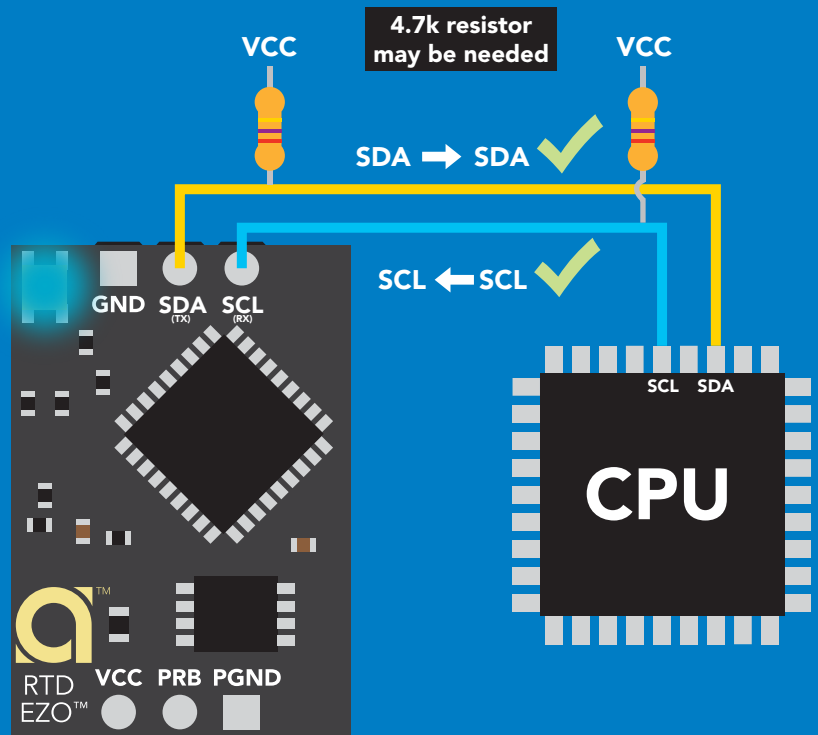
Vcc 3.3V – 5.5V

Clock speed 100 – 400 kHz

SDA 

SCL 

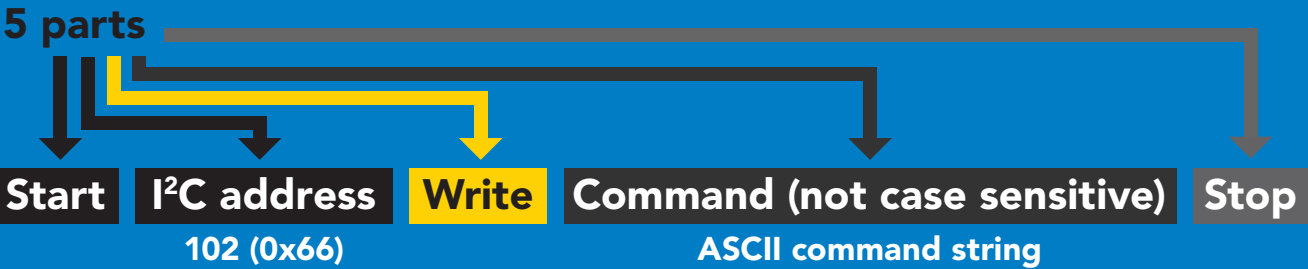




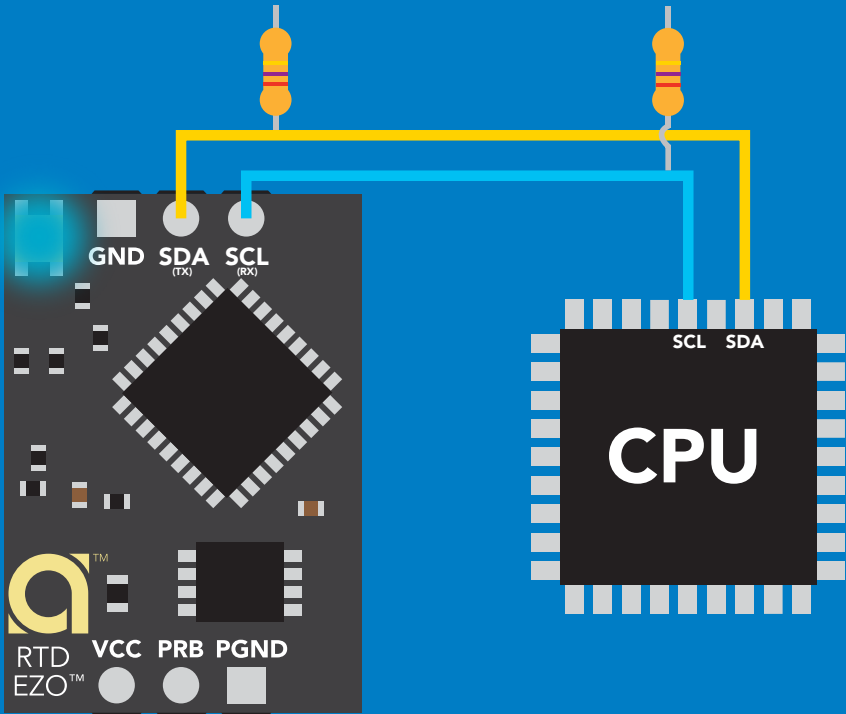
Data format

Reading	temperature	Data type	floating point
Units	°C, °K, or °F	Decimal places	3
Encoding	ASCII	Smallest string	4 characters
Format	string	Largest string	40 characters

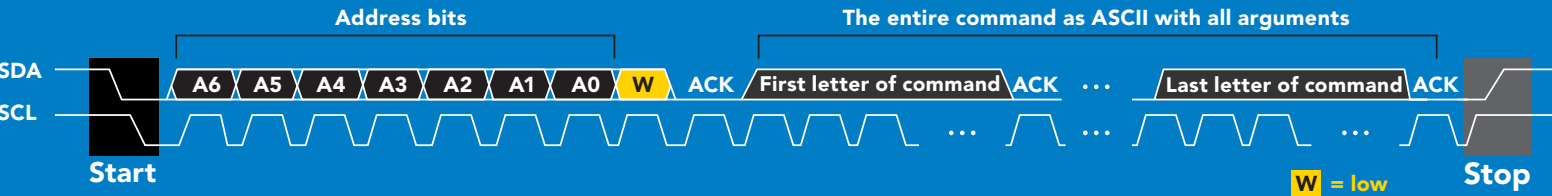
Sending commands to device



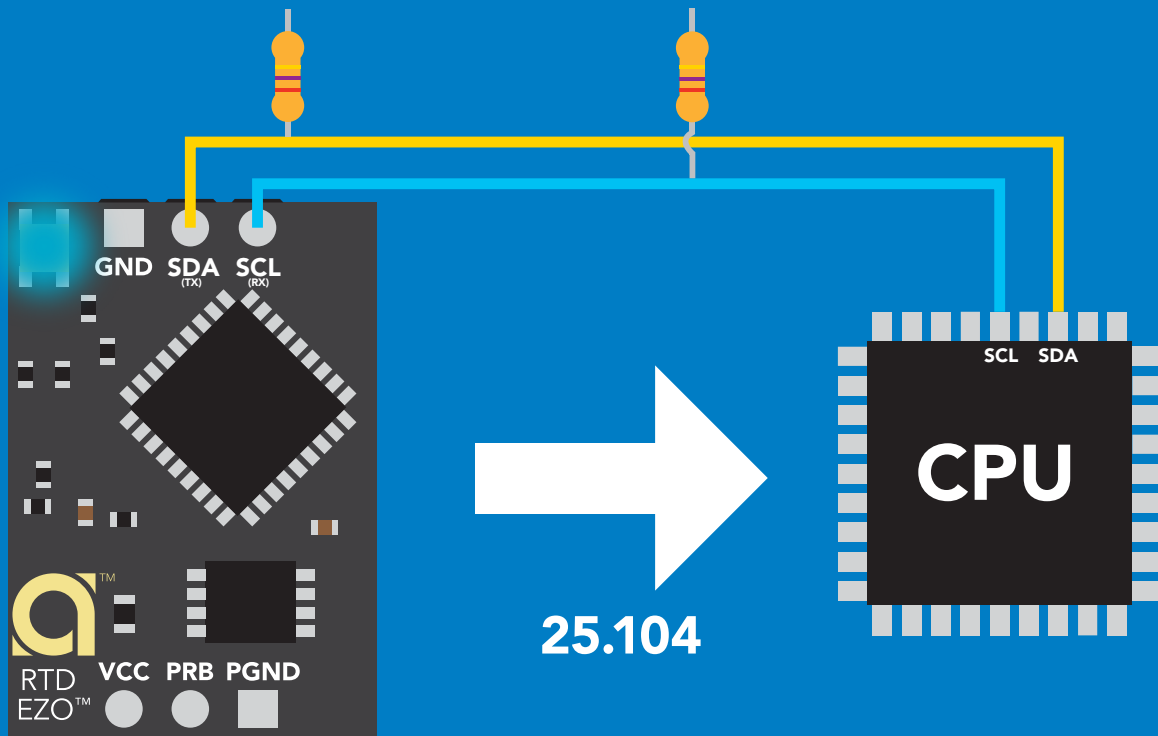
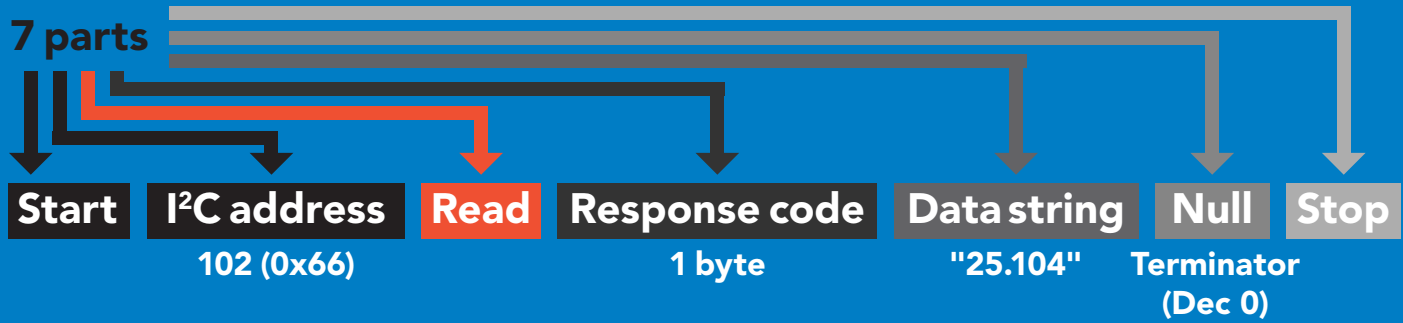
Example



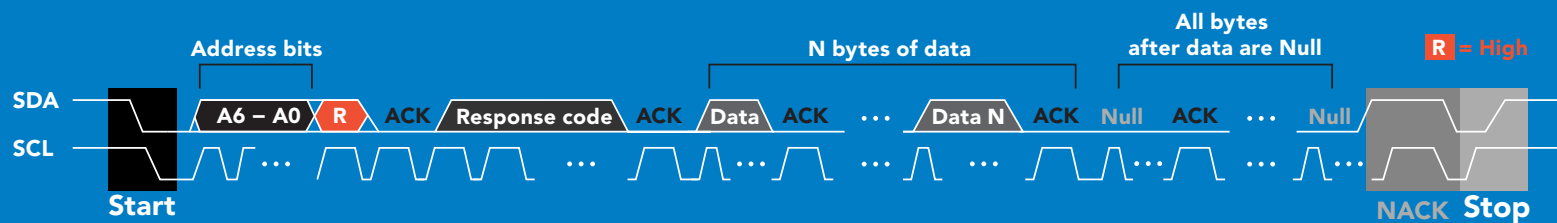
Advanced



Requesting data from device



Advanced



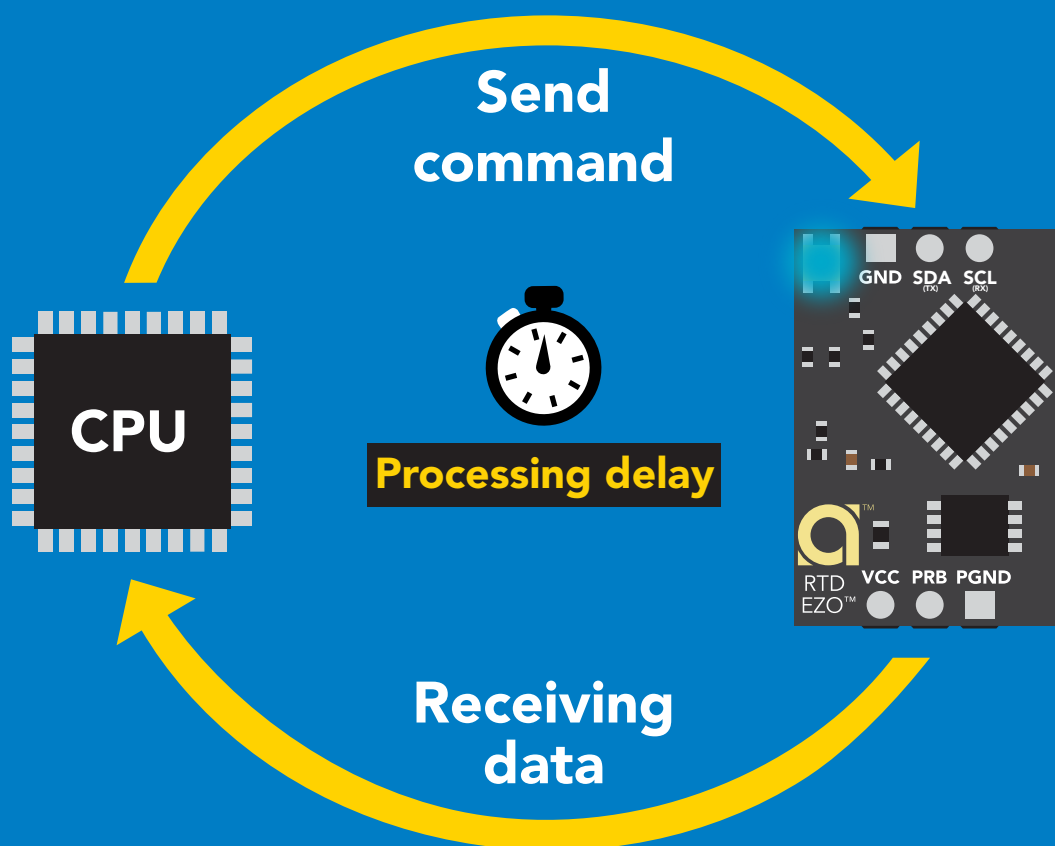
1 50 53 46 49 48 52 0 = 25.104

Dec ASCII Dec

Response codes

After a command has been issued, a 1 byte response code can be read in order to confirm that the command was processed successfully.

Reading back the response code is completely optional, and is not required for normal operation.



Example

```
I2C_start;  
I2C_address;  
I2C_write(EZO_command);  
I2C_stop;
```

delay(300);



Processing delay

```
I2C_start;  
I2C_address;  
Char[ ] = I2C_read;  
I2C_stop;
```

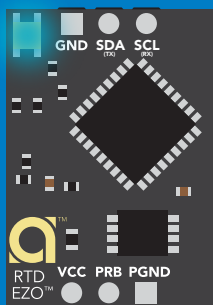
If there is no processing delay or the processing delay is too short, the response code will always be 254.

Response codes

Single byte, not string

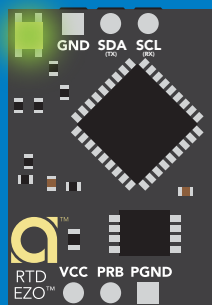
255	no data to send
254	still processing, not ready
2	syntax error
1	successful request

LED color definition



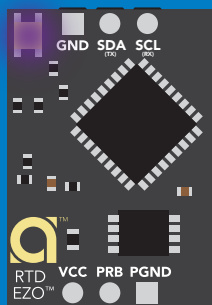
Blue

I²C standby



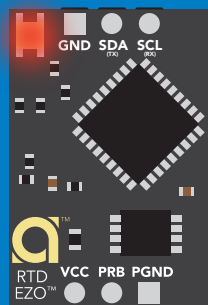
Green

Taking reading



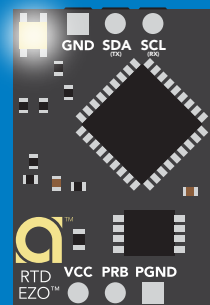
Purple

**Changing
I²C address**



Red

**Command
not understood**



White

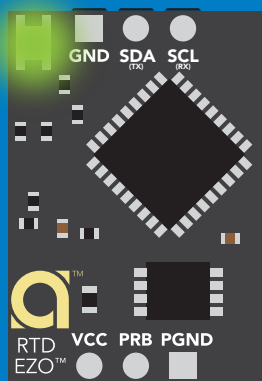
Find

5V

**LED ON
+0.4 mA**

3.3V

+0.2 mA



Solid Green LED

**in UART mode
Not I²C ready**

I²C mode

command quick reference

All commands are ASCII strings or single ASCII characters.

Command	Function	
Baud	switch back to UART mode	pg. 59
Cal	performs calibration	pg. 45
D	enable/disable data logger	pg. 49
Export	export calibration	pg. 46
Factory	enable factory reset	pg. 58
Find	finds devices with white blinking LED	pg. 43
i	device information	pg. 53
I2C	change I ² C address	pg. 57
Import	import calibration	pg. 47
L	enable/disable LED	pg. 42
M	memory recall/clear	pg. 50
Name	set/show name of device	pg. 52
Plock	enable/disable protocol lock	pg. 56
R	returns a single reading	pg. 44
S	temperature scale (°C, °K, °F)	pg. 48
Sleep	enter sleep mode/low power	pg. 55
Status	retrieve status information	pg. 54

LED control

Command syntax

300ms  processing delay

L,1 LED on **default**

L,0 LED off

L,? LED state on/off?

Example

Response

L,1


Wait 300ms

1	0
Dec	Null

L,0


Wait 300ms

1	0
Dec	Null

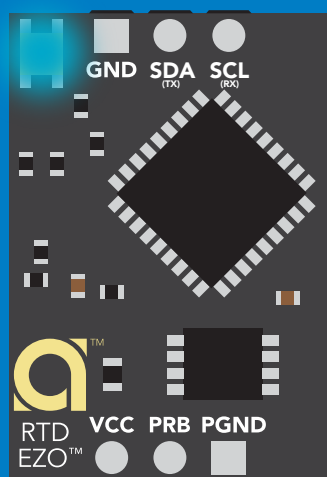
L,?


Wait 300ms

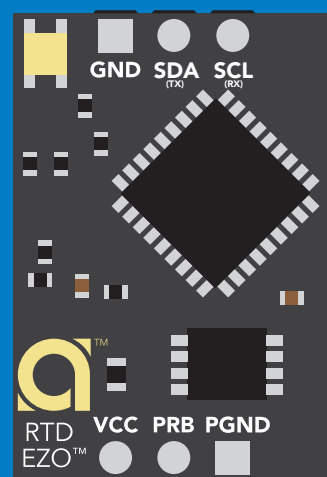
1	?L,1	0
Dec	ASCII	Null

or

1	?L,0	0
Dec	ASCII	Null



L,1



L,0

Find

300ms  processing delay

Command syntax

This command will disable continuous mode
Send any character or command to terminate find.

Find LED rapidly blinks white, used to help find device

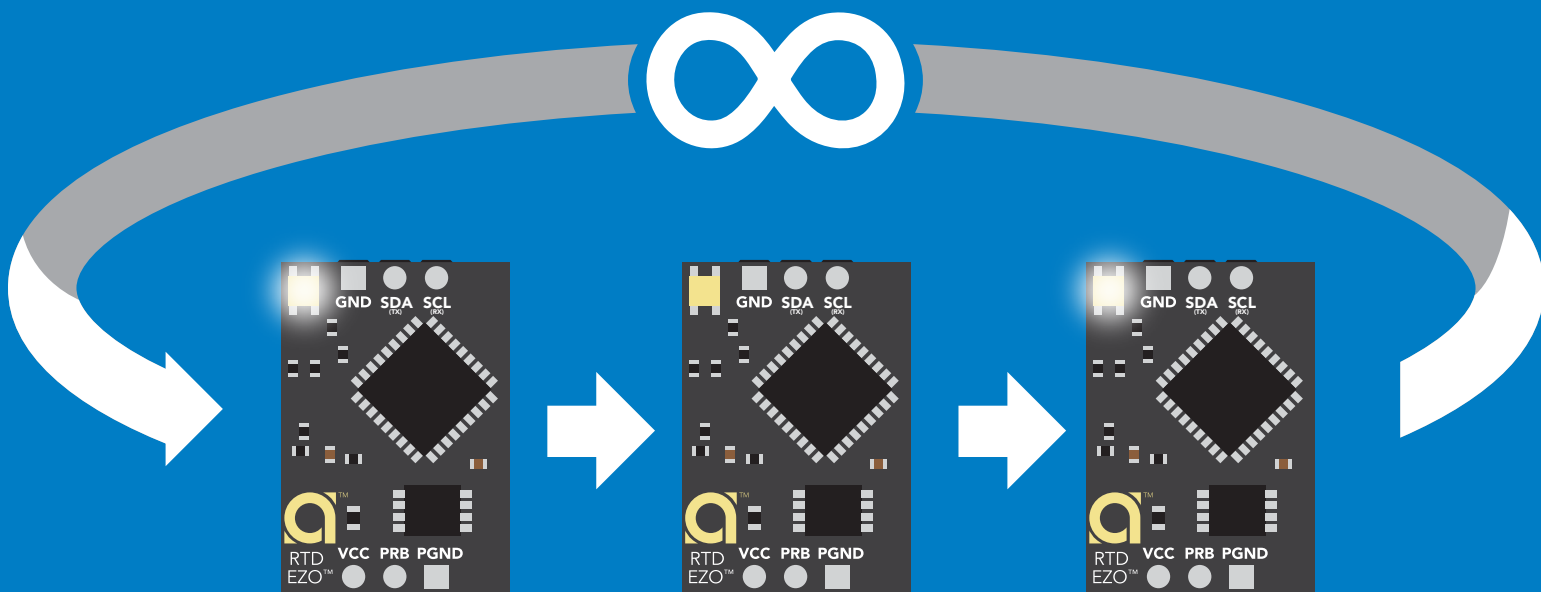
Example

Find <cr>

Response

 **Wait 300ms**

1	0
Dec	Null



Taking reading

Command syntax


600ms  processing delay

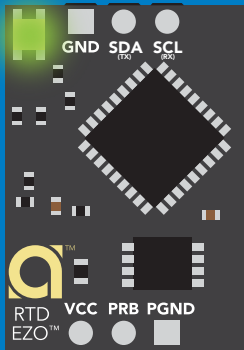
R return 1 reading

Example

R

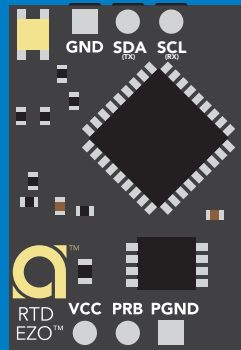
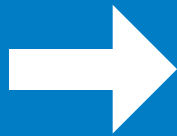
Response

	1	25.104	0
Wait 600ms	Dec	ASCII	Null

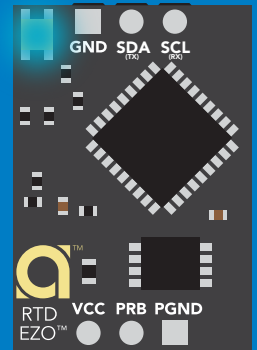
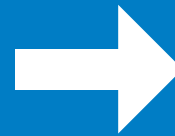


Green

Taking reading



Transmitting



Blue

Standby

Calibration

Command syntax

600ms  processing delay

Cal,t t = any temperature
Cal,clear delete calibration data
Cal,? device calibrated?

EZO™ RTD circuit uses single point calibration.

Example

Response

Cal,t

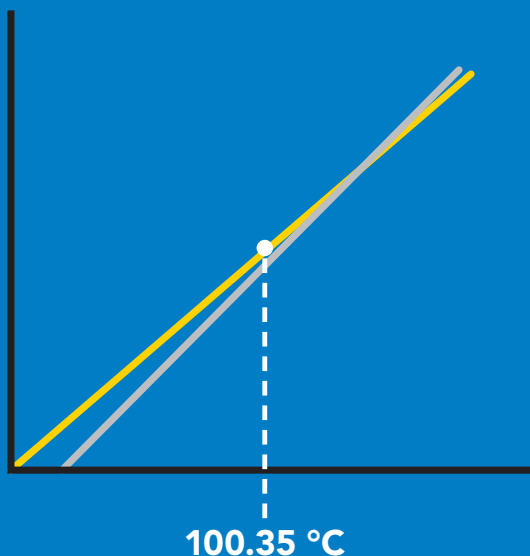
 **Wait 600ms**
1 Dec 0 Null

Cal,clear

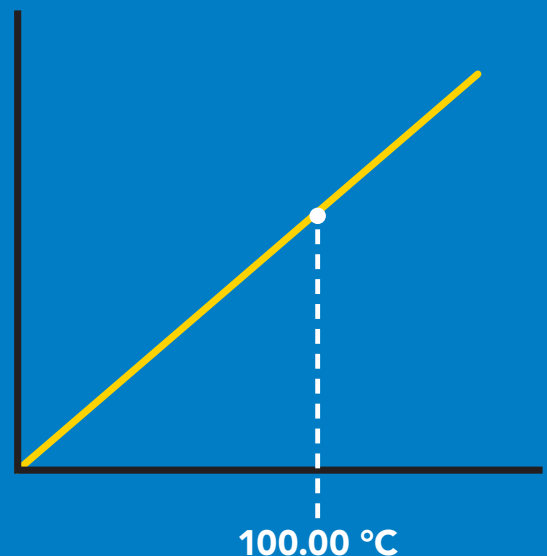
 **Wait 300ms**
1 Dec 0 Null

Cal,?

 **Wait 300ms**
1 Dec ?Cal,1 0 Null or 1 Dec ?Cal,0 0 Null



→
Cal,100.00



Export calibration

300ms  processing delay

Command syntax

Export: Use this command to download calibration settings

Export,? calibration string info

Export export calibration string from calibrated device

Example

Response

Export,?

 **Wait 300ms** **1** **10,120** **0**
Dec ASCII Null

Response breakdown

10, 120
of strings to export # of bytes to export

Export strings can be up to 12 characters long

Export

 **Wait 300ms** **1** **59 6F 75 20 61 72** **0** **(1 of 10)**
Dec ASCII Null

Export

 **Wait 300ms** **1** **65 20 61 20 63 6F** **0** **(2 of 10)**
Dec ASCII Null

(7 more)

⋮

Export

 **Wait 300ms** **1** **6F 6C 20 67 75 79** **0** **(10 of 10)**
Dec ASCII Null

Export

 **Wait 300ms** **1** ***DONE** **0**
Dec ASCII Null

Import calibration

300ms  processing delay

Command syntax

Import: Use this command to upload calibration settings to one or more devices.

Import,n import calibration string to new device

Example

Import, 59 6F 75 20 61 72 (1 of 10)

Import, 65 20 61 20 63 6F (2 of 10)

⋮

Import, 6F 6C 20 67 75 79 (10 of 10)

Response

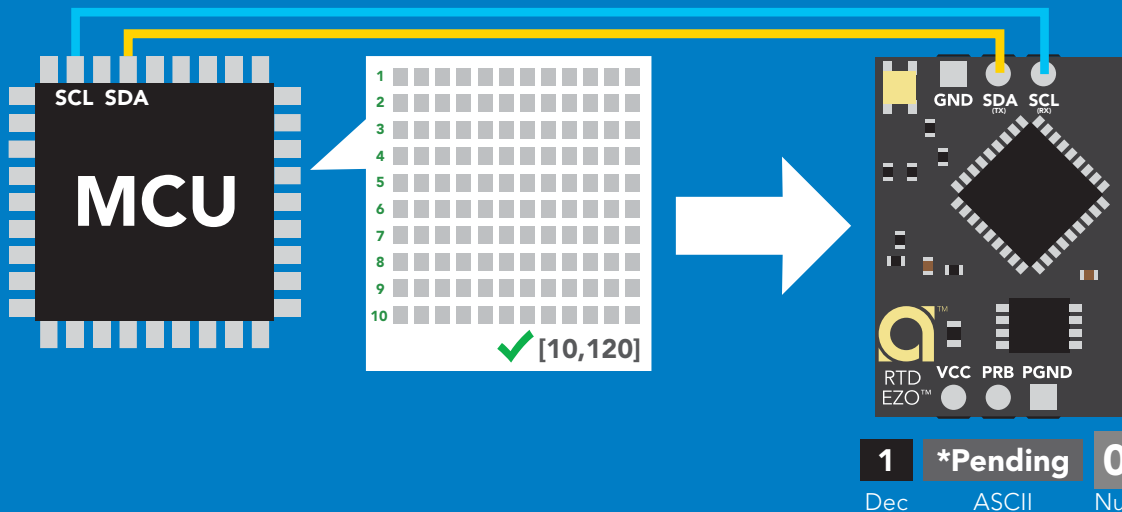
 **1** **0**
Wait 300ms Dec Null

 **1** **0**
Wait 300ms Dec Null

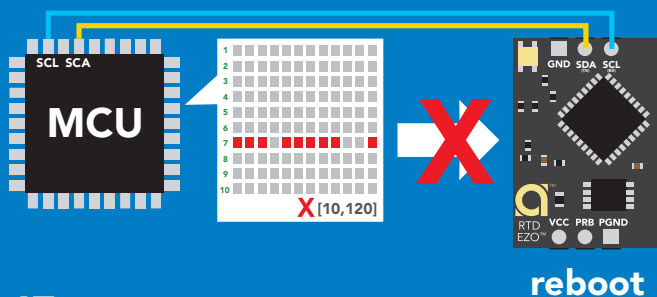
⋮

 **1** **0**
Wait 300ms Dec Null

Import,n



system will reboot



* If one of the imported strings is not correctly entered, the device will not accept the import and reboot.

Temperature scale (°C, °K, °F)

Command syntax

300ms  processing delay

S,c celsius **default**
S,k kelvin
S,f fahrenheit
S,? temperature scale?

Example

Response

S,c

 **Wait 300ms** **1** **0**
Dec Null

S,k

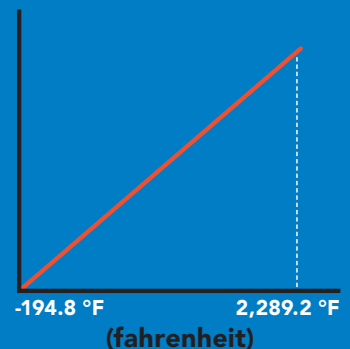
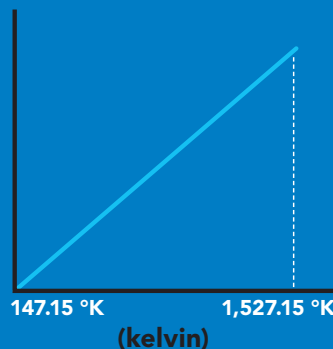
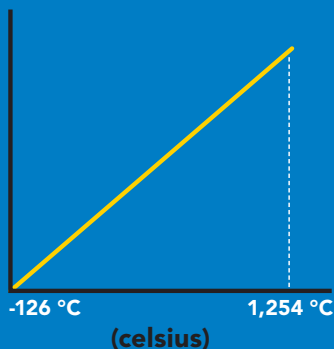
 **Wait 300ms** **1** **0**
Dec Null

S,f

 **Wait 300ms** **1** **0**
Dec Null

S,?

 **Wait 300ms** **1** **?S,f** **0** or **1** **?S,k** **0** or **1** **?S,k** **0**
Dec ASCII Null Dec ASCII Null Dec ASCII Null



Enable/disable data logger

Command syntax

300ms  processing delay

D,n n = (n x 10 seconds)

D,0 disable

D,? data logger storage interval?

The time period (n) is in 10 second intervals and can be any value from 1 to 32,000.

Example

Response

D,6

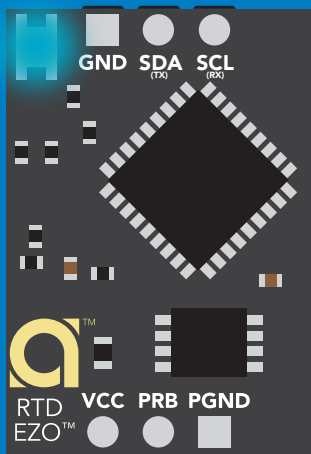
 Wait 300ms
1 0
Dec Null

D,0

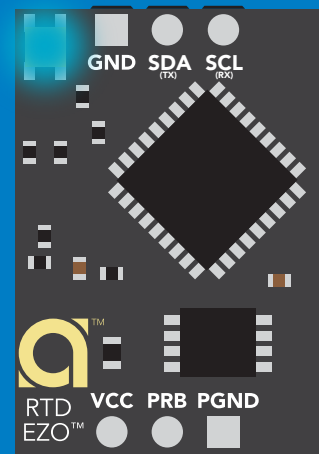
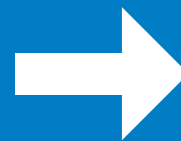
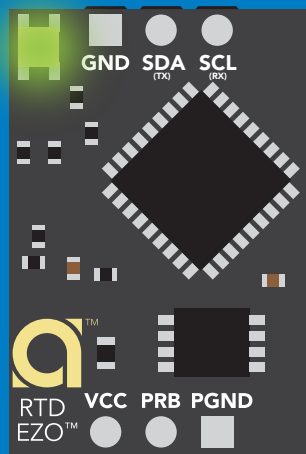
 Wait 300ms
1 0
Dec Null

D,?

 Wait 300ms
1 ?D,6 0
Dec ASCII Null



→
D,6
(after 60 seconds)



Memory recall

Disable data logger to recall memory.

Command syntax

300ms  processing delay

M recall 1 sequential stored reading

M,? display memory location of last stored reading

Example

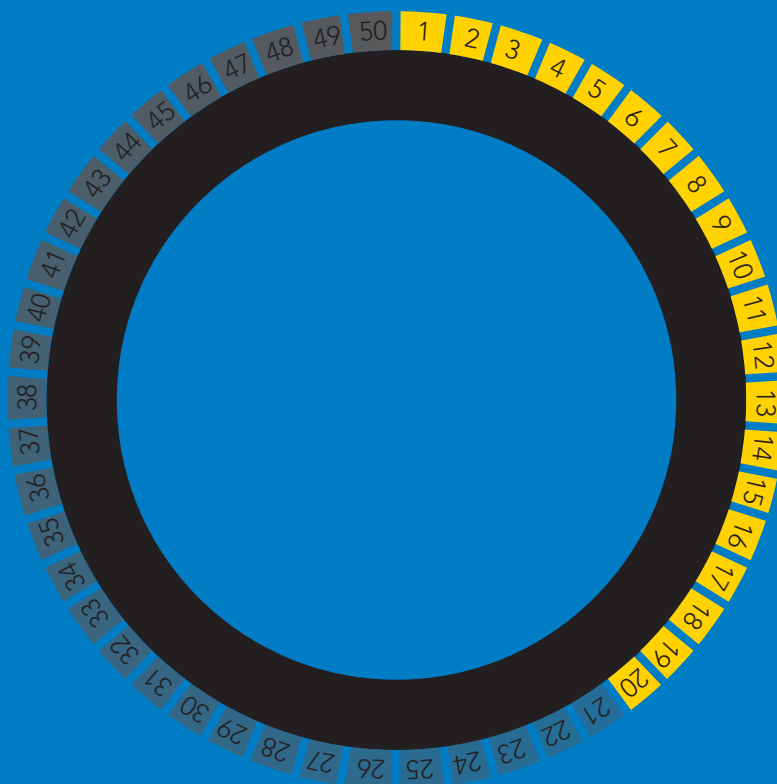
Response

M

 **Wait 300ms** **1** **1,100.00** **0**
Dec ASCII Null

M,?

 **Wait 300ms** **1** **4,112.00** **0**
Dec ASCII Null



Memory clear

Command syntax

300ms  processing delay

M,clear clear all stored memory

Example

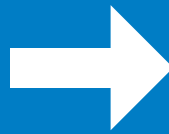
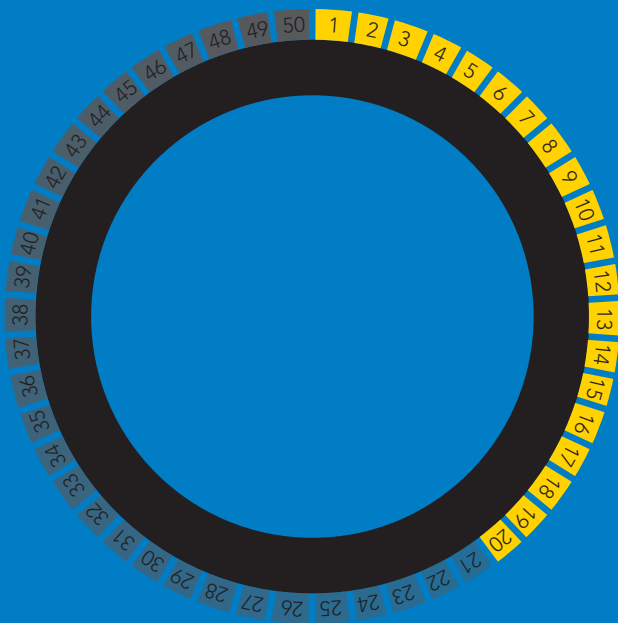
M,clear

Response

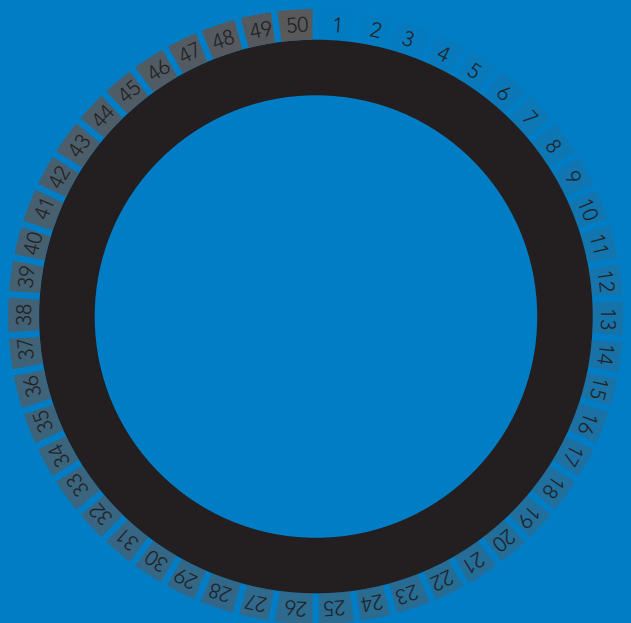

Wait 300ms

1
Dec

0
Null



M,clear



Naming device

300ms  processing delay

Command syntax

Do not use spaces in the name

Name,n	set name	n =	1	2	3	4	5	6	7	8	9	10	11	12	13	14	15	16
Name,	clears name																	
Name,?	show name																	

Up to 16 ASCII characters

Example

Response

Name,



1 0
Dec Null

name has been cleared

Name,zzt



1 0
Dec Null

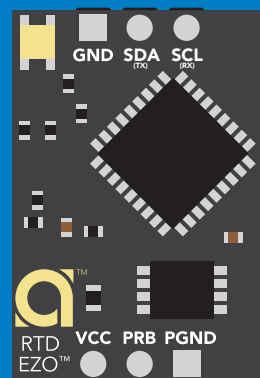
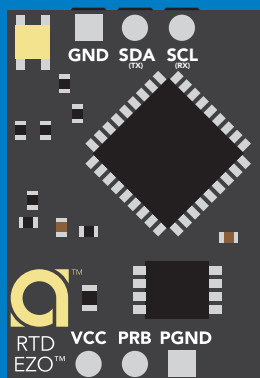
Name,?



1 ?Name,zzt 0
Dec ASCII Null

Name,zzt

Name,?



1 0

1 ?Name,zzt 0

Protocol lock

Command syntax

300ms  processing delay

Plock,1 enable Plock

Plock,0 disable Plock

Plock,? Plock on/off?

default

Locks device to I²C mode.

Example

Response

Plock,1

 Wait 300ms
1 0
Dec Null

Plock,0

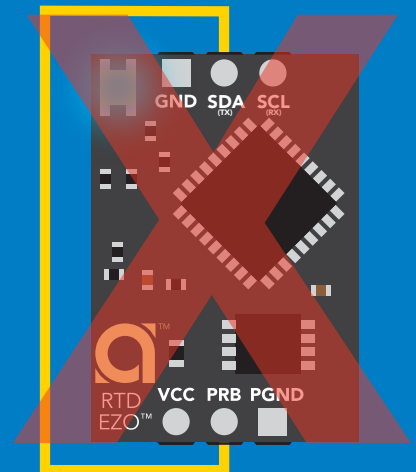
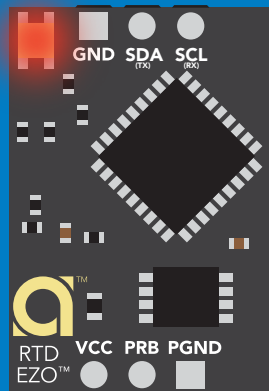
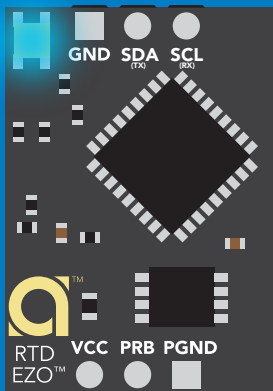
 Wait 300ms
1 0
Dec Null

Plock,?

 Wait 300ms
1 ?Plock,1 0
Dec ASCII Null

Plock,1

Baud, 9600



cannot change to UART

cannot change to UART

I²C address change

Command syntax

300ms  processing delay

I2C,n sets I²C address and reboots into I²C mode

Example

Response

I2C,100

device reboot
(no response given)

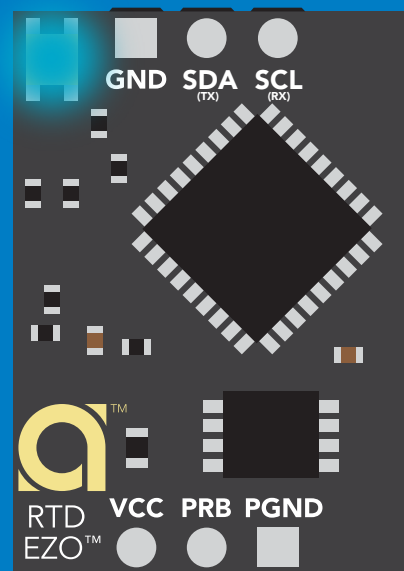
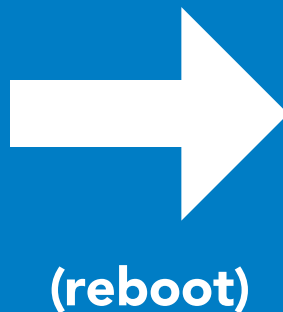
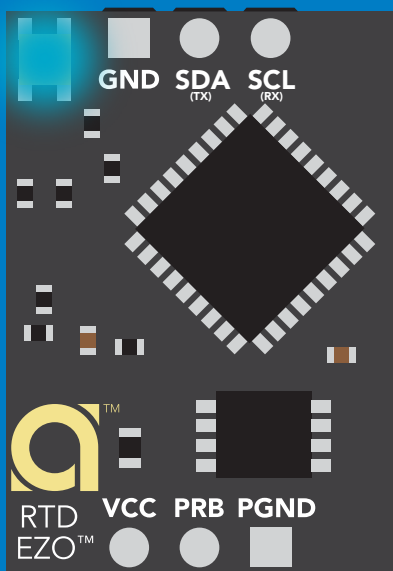
Warning!

Changing the I²C address will prevent communication between the circuit and the CPU until the CPU is updated with the new I²C address.

Default I²C address is 102 (0x66).

n = any number 1 – 127

I2C,100



Factory reset

Command syntax

Factory reset will not take the device out of I²C mode.

Factory enable factory reset

I²C address will not change

Example

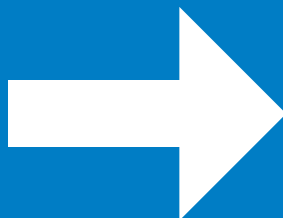
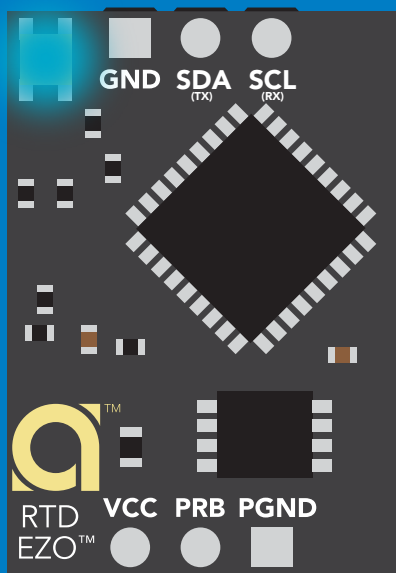
Response

Factory

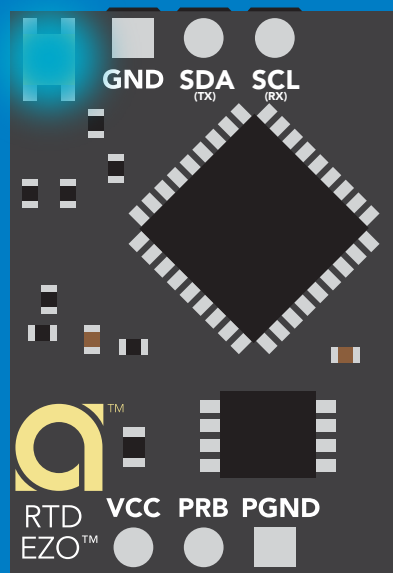
device reboot
(no response given)

Clears calibration
LED on
Response codes enabled
Clears data logger

Factory



(reboot)



Change to UART mode

Command syntax

Baud,n switch from I²C to UART

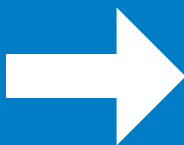
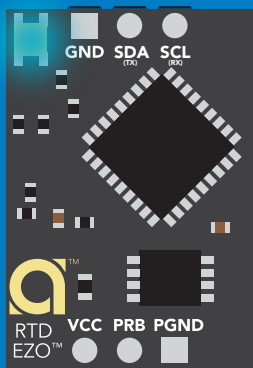
Example

Baud,9600

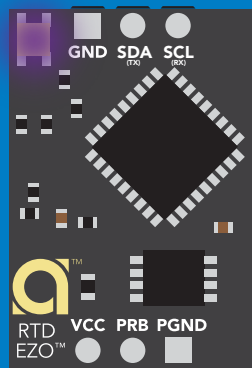
Response

reboot in UART mode
(no response given)

n = [300
1200
2400
9600
19200
38400
57600
115200



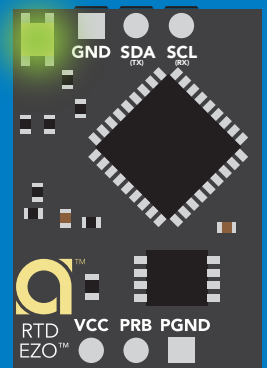
Baud,9600



Changing to
UART mode



(reboot)

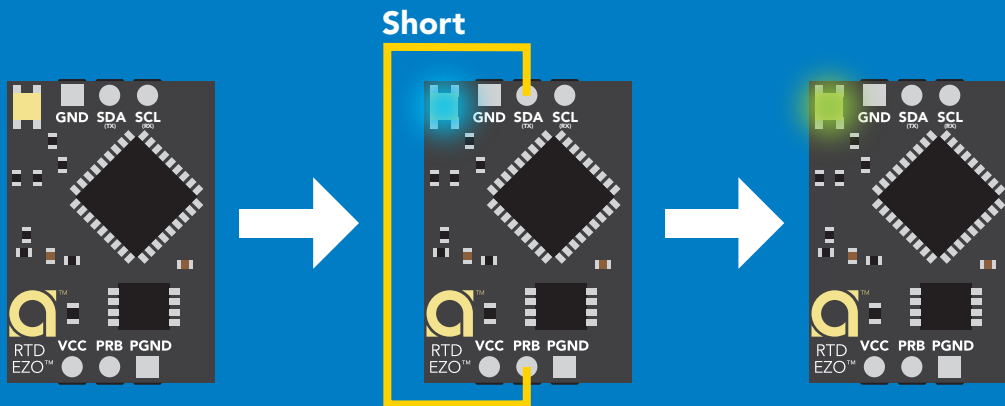


Manual switching to UART

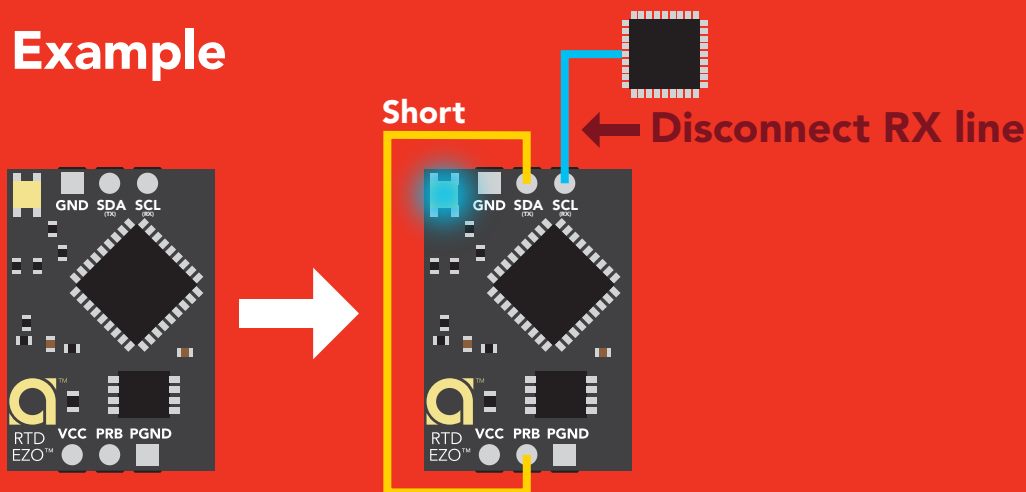
- Disconnect ground (power off)
- Disconnect TX and RX
- Connect TX to PRB
- Confirm RX is disconnected
- Connect ground (power on)
- Wait for LED to change from Blue to Green
- Disconnect ground (power off)
- Reconnect all data and power

Connecting TX to PRB only works for the EZO-RTD™ and the EZO-FLO™ circuits

Example



Wrong Example

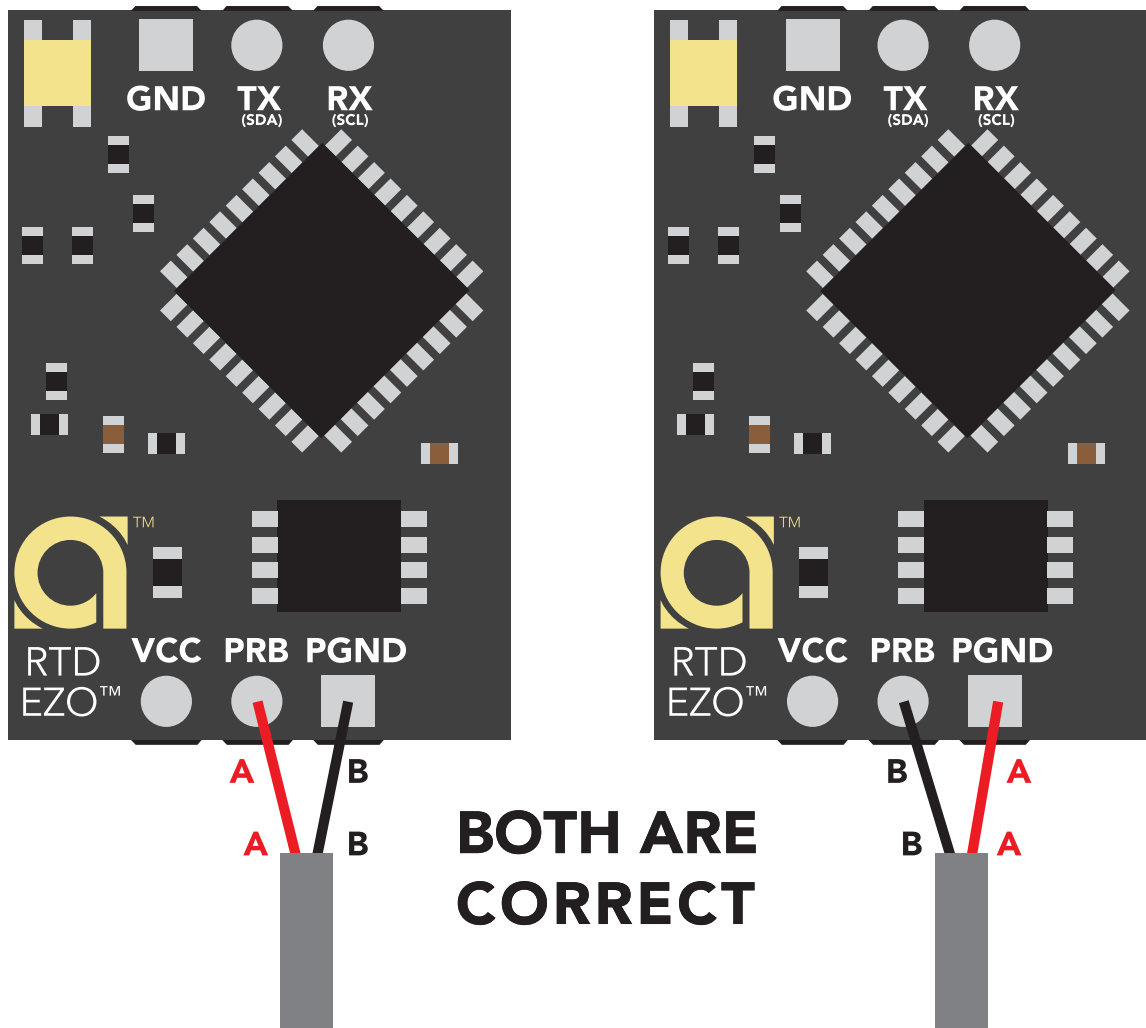


Using other brand PT-100/PT-1000

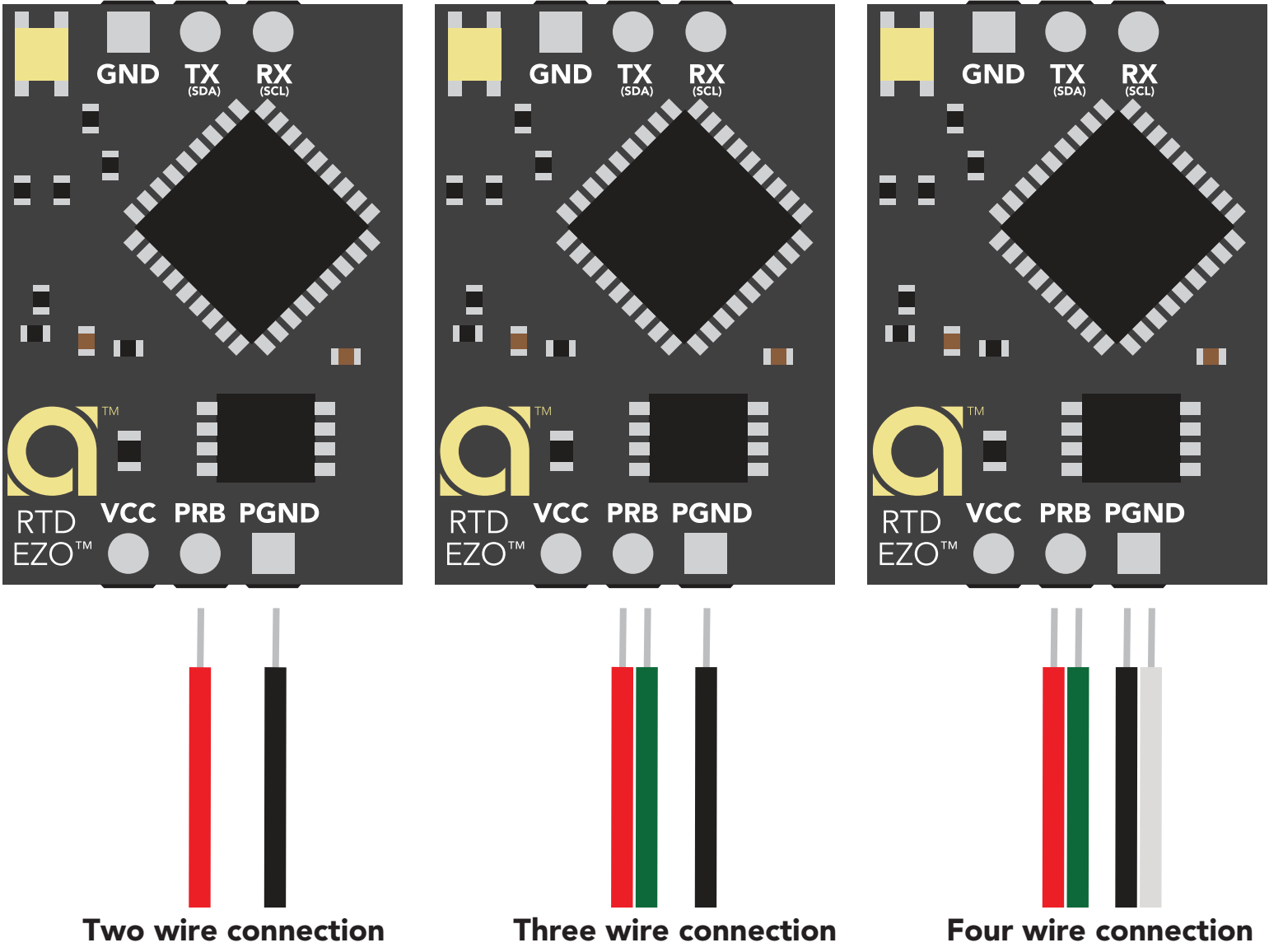
The EZO™ RTD Temperature circuit will auto-detect if the connected probe is PT-100 or PT-1000.

Probe class	Accuracy
AA	+/- (0.1 + 0.0017 x °C)
A	+/- (0.15 + 0.002 x °C)
B	+/- (0.3 + 0.005 x °C)
C	+/- (0.6 + 0.01 x °C)

It makes no difference which lead of the temperature probe is connected to the two probe pins.



Any off the shelf PT-100 or PT-1000 temperature probe can be used with the Atlas Scientific EZO™ RTD Temperature circuit. The PT-100 or PT-1000 temperature probe can be a 2, 3 or 4 wire probe.



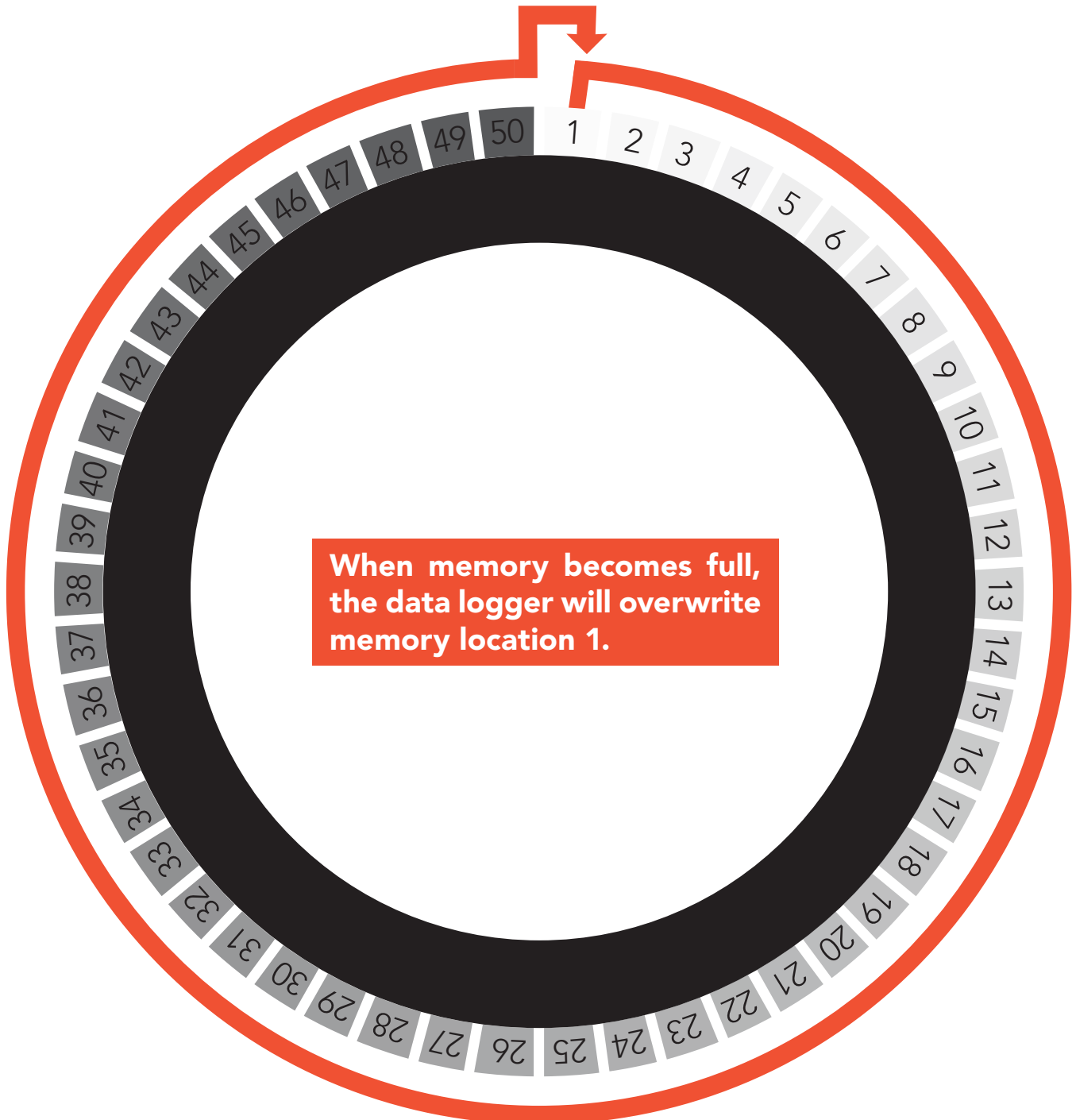
On board data logger

- 50 readings
- Programmable storage interval

Minimum – 10 seconds

Maximum – 320,000 seconds

Temperature readings that are stored to the data logger will be retained even if the power is cut.



Calibration theory

The most important part of calibration is watching the readings during the calibration process. It's easiest to calibrate the device in its default state (UART mode, continuous readings). Switching the device to I²C mode after calibration **will not** affect the stored calibration. If the device must be calibrated in I²C mode be sure to request readings continuously so you can see the output from the probe.

Calibration can be done at any value, a simple method is to calibrate the probe in boiling water.

100 °C

Atlas Scientific recommends calibration be done every three years.

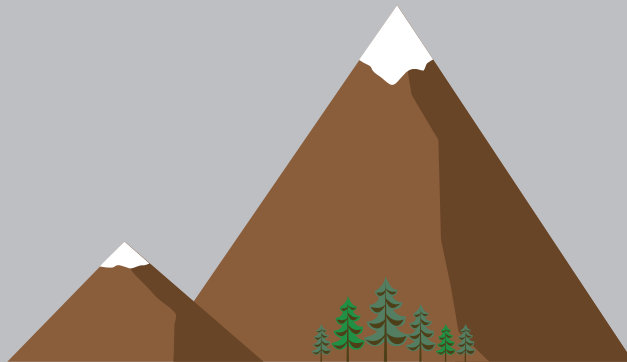
Elevation and boiling point table

Elevation in meters

305
229
152
76
0
-76
-152

Boiling point

98.9 °C
99.2 °C
99.5 °C
99.7 °C
100 °C
100.3 °C
100.5 °C

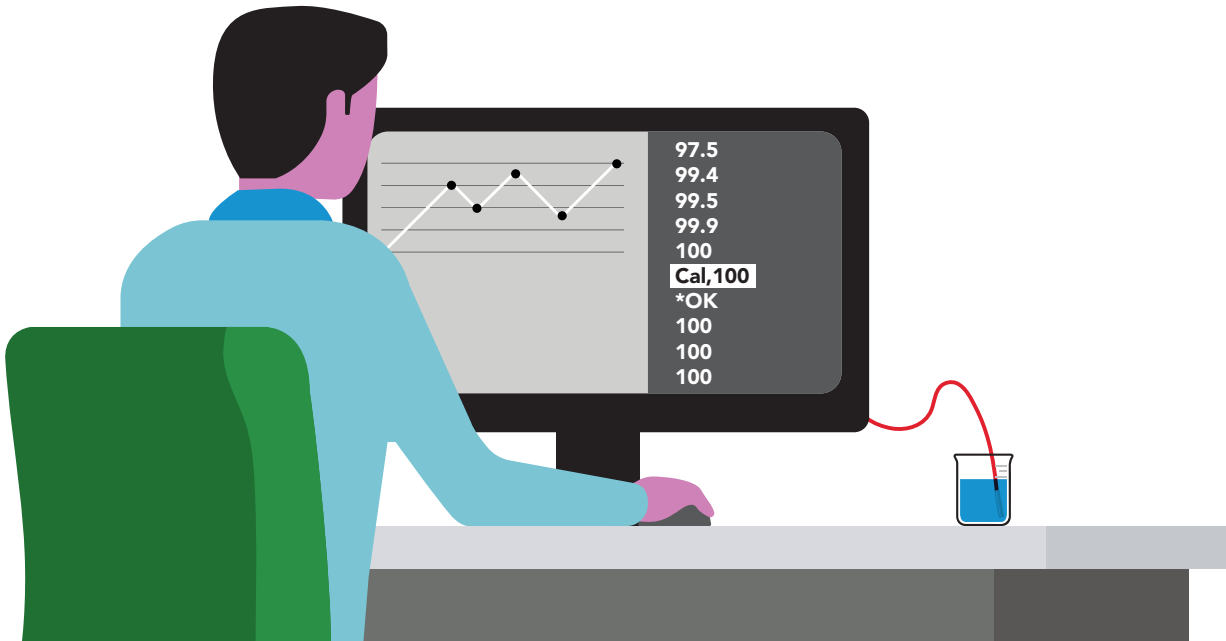


Use purified/distilled water

For accurate calibration using different temperature values, you must use a tool called a "dry block calibrator."

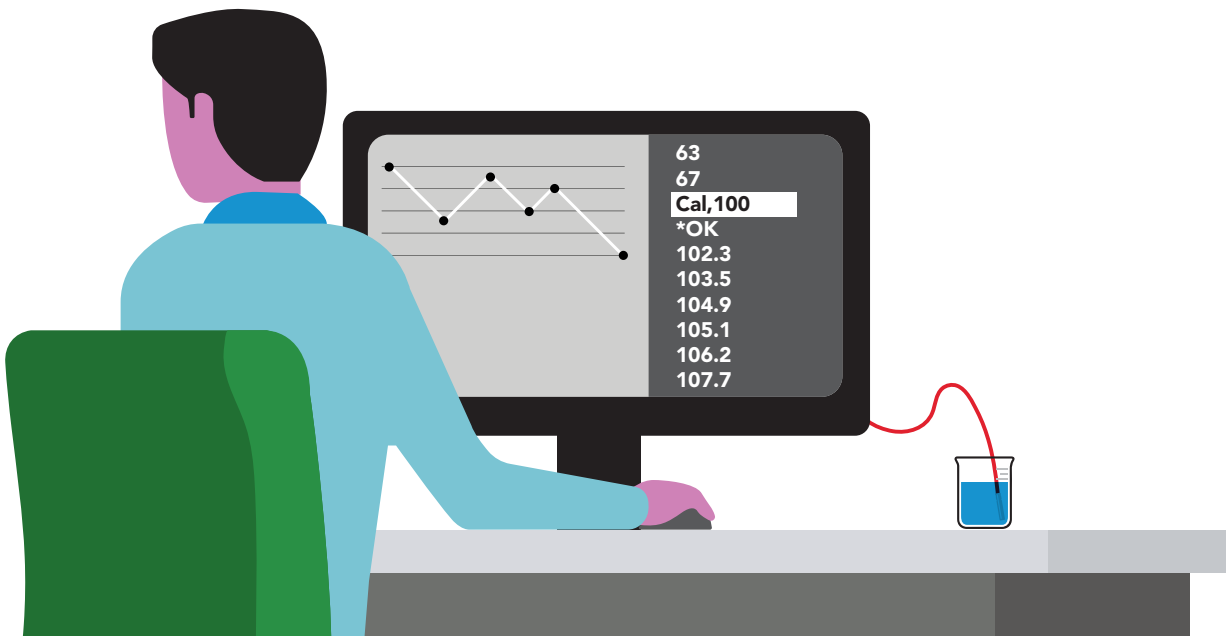
Best practices for calibration

Always watch the readings throughout the calibration process.
Issue calibration commands once the readings have stabilized.



⚠ Never do a blind calibration! ⚠

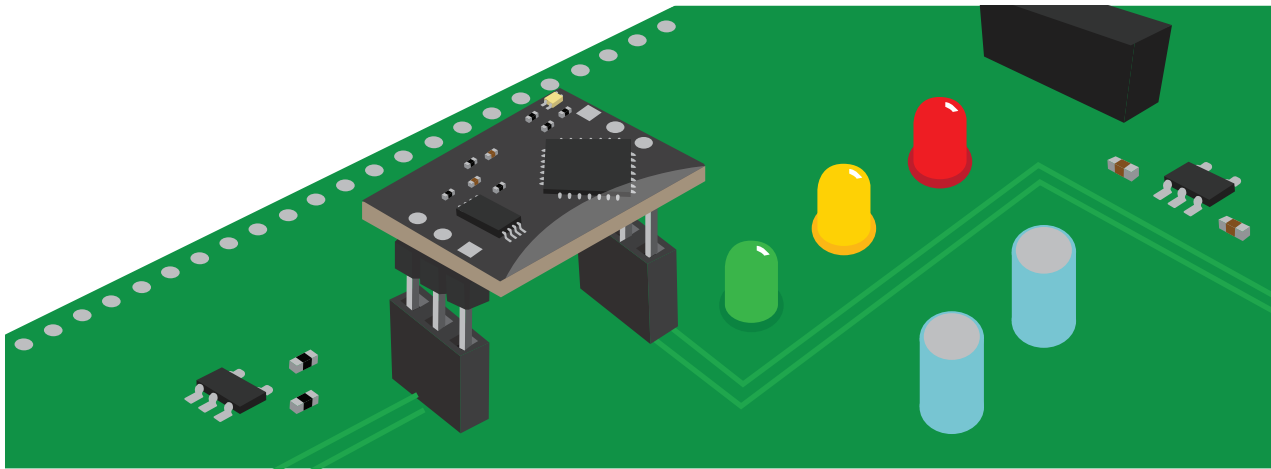
Issuing a calibration command before the readings stabilize will result in drifting readings.



Soldering

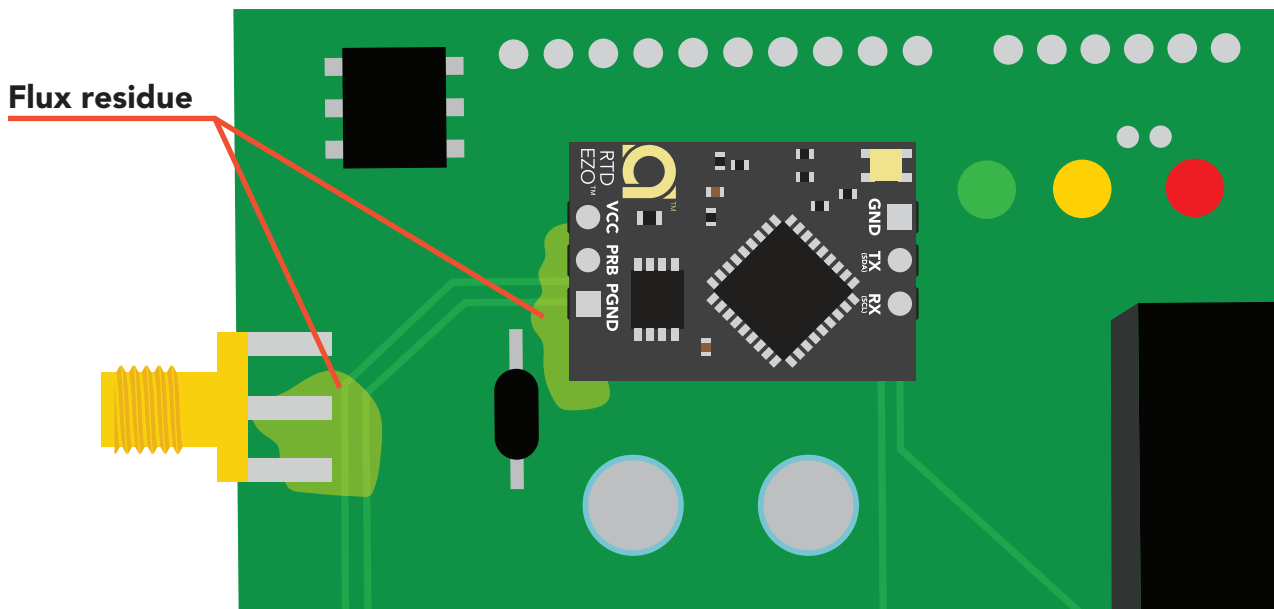
Do not directly solder an EZO circuit to your PCB. If something goes wrong during the soldering process it may become impossible to correct the problem. It is simply not worth the risk.

Instead, solder female header pins to your PCB and place the EZO device in the female headers.



Avoid using rosin core solder.
Use as little flux as possible.

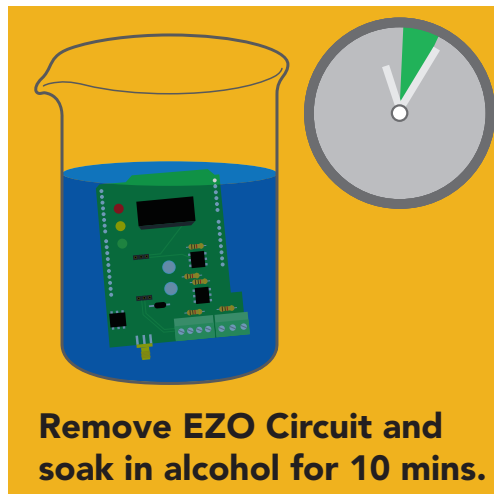
Flux residue will severely affect your readings. Any Flux residue that comes in contact with the PRB pins or your probes connector will cause a “flux short”.



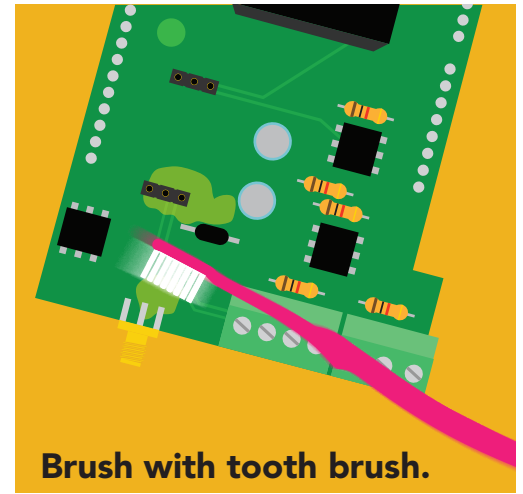
You **MUST** remove all the flux residue from your PCB after soldering.

Soldering

Removing flux residue can be done with commercially available products such as flux off or you can use alcohol and a tooth brush.



**Remove EZO Circuit and
soak in alcohol for 10 mins.**



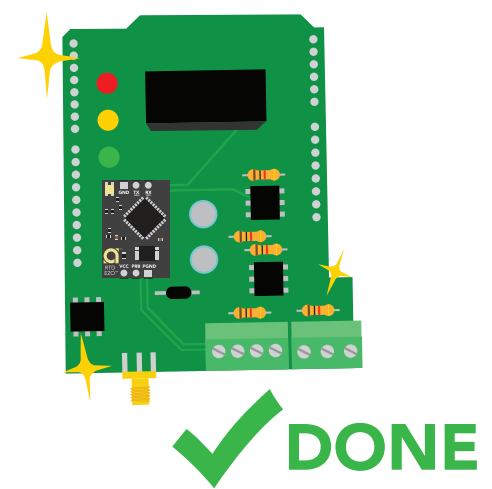
Brush with tooth brush.



Soak in alcohol for 5 mins.



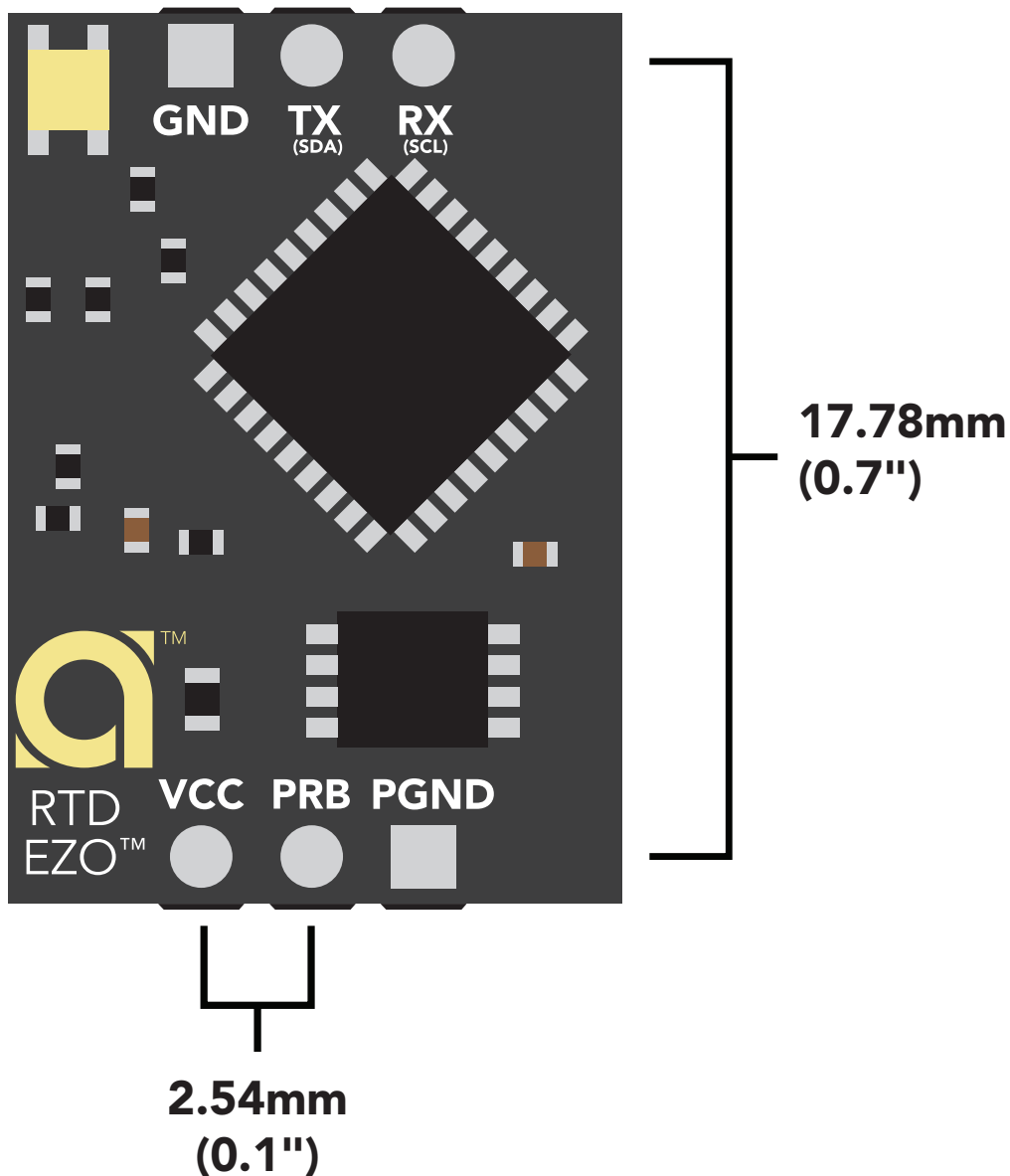
Let it dry in the air.



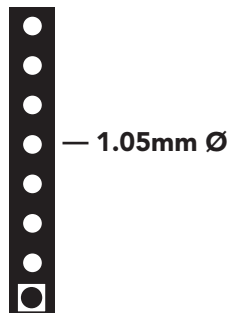
What does a flux short look like?

Readings move slowly and take several minutes to reach the correct value.

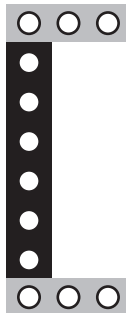
EZO™ circuit footprint



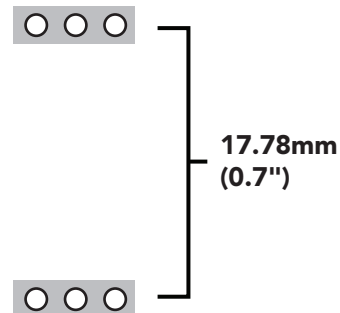
1 In your CAD software place a 8 position header.



2 Place a 3 position header at both top and bottom of the 8 position.



3 Delete the 8 position header. The two 3 position headers are now 17.78mm (0.7") apart from each other.



Datasheet change log

Datasheet V 3.7

Revised artwork throughout datasheet.

Datasheet V 3.6

Revised naming device info on pages 33 & 60.

Datasheet V 3.5

Added 2 wire, 3 wire, or 4 wire, wiring diagram on pg 7.

Datasheet V 3.4

Revised accuracy equation on pg 7.

Datasheet V 3.3

Moved Default state to pg 13.

Datasheet V 3.2

Revised response for the sleep command in UART mode on pg 36.

Datasheet V 3.1

Added more information on the Export calibration and Import calibration commands.

Datasheet V 3.0

Changed "Max rate" to "Response time" on cover page.

Datasheet V 2.9

Removed note from certain commands about firmware version.

Datasheet V 2.8

Added information to calibration theory on pg 9.

Datasheet V 2.7

Revised definition of response codes on pg 45.

Datasheet V 2.6

Updated calibration processing delay time on pg.51.

Datasheet change log

Datasheet V 2.5

Revised Plock pages to show default value.

Datasheet V 2.4

Added new commands:

"Find" pages 22 & 49.

"Export/Import calibration" pages 26 & 52.

Added new feature to continuous mode "C,n" pg 23.

Datasheet V 2.3

Added manual switching to UART information on pg. 59.

Datasheet V 2.2

Revised Baud command information on pg. 33.

Datasheet V 2.1

Revised entire datasheet.

Firmware updates

V1.02 – Plock (March 31, 2016)

- Added protocol lock feature “Plock”

V1.03 – EEPROM (April 26, 2016)

- Fixed bug where EEPROM would get erased if the circuit lost power 900ms into startup

V1.11 – Bug Fix (June 9, 2016)

- Fixed bug where a blank name would result in garbage output

V2.01 – Update (January 1, 2017)

- Replaced command “response” with “*OK”
- Replaced command “Serial” with “Baud”

V2.02 – Bug Fix (February 16, 2017)

- Fixed bug where calibration would not accept floating point numbers.

V2.10 – (May 9, 2017)

- Added “Find” command.
- Added “Export/import” command.
- Modified continuous mode to be able to send readings every “n” seconds.
- Sleep current is lowered.

V2.11 - Bug Fix (November 19, 2020)

- Fixed bug where the first reading after boot up could be -1024

V2.12 - (June 9, 2022)

- Internal update for new part compatibility.

V2.13 - (August 10, 2022)

- Internal update for new part compatibility.

V2.14 - (January 11, 2023)

- Internal update for new part compatibility.

Warranty

Atlas Scientific™ Warranties the EZO™ class RTD circuit to be free of defect during the debugging phase of device implementation, or 30 days after receiving the EZO™ class RTD circuit (which ever comes first).

The debugging phase

The debugging phase as defined by Atlas Scientific™ is the time period when the EZO™ class RTD circuit is inserted into a bread board, or shield. If the EZO™ class RTD circuit is being debugged in a bread board, the bread board must be devoid of other components. If the EZO™ class RTD circuit is being connected to a microcontroller, the microcontroller must be running code that has been designed to drive the EZO™ class RTD circuit exclusively and output the EZO™ class RTD circuit data as a serial string.

It is important for the embedded systems engineer to keep in mind that the following activities will void the EZO™ class RTD circuit warranty:

- Soldering any part of the EZO™ class RTD circuit.
- Running any code, that does not exclusively drive the EZO™ class RTD circuit and output its data in a serial string.
- Embedding the EZO™ class RTD circuit into a custom made device.
- Removing any potting compound.

Reasoning behind this warranty

Because Atlas Scientific™ does not sell consumer electronics; once the device has been embedded into a custom made system, Atlas Scientific™ cannot possibly warranty the EZO™ class RTD circuit, against the thousands of possible variables that may cause the EZO™ class RTD circuit to no longer function properly.

Please keep this in mind:

- 1. All Atlas Scientific™ devices have been designed to be embedded into a custom made system by you, the embedded systems engineer.**
- 2. All Atlas Scientific™ devices have been designed to run indefinitely without failure in the field.**
- 3. All Atlas Scientific™ devices can be soldered into place, however you do so at your own risk.**

Atlas Scientific™ is simply stating that once the device is being used in your application, Atlas Scientific™ can no longer take responsibility for the EZO™ class RTD circuits continued operation. This is because that would be equivalent to Atlas Scientific™ taking responsibility over the correct operation of your entire device.